



INSTITUTE
OF ECONOMIC STUDIES
Faculty of Social Sciences
Charles University

INSTITUTIONS, FINANCIAL DEVELOPMENT, AND SMALL BUSINESS SURVIVAL: EVIDENCE FROM EUROPEAN EMERGING MARKETS

Ichiro Iwasaki
Evžen Kočenda
Yoshisada Shida

IES Working Paper 39/2020

$$\frac{1!}{(m-1)!} p^{m-1} (1-p)^{n-m} = p \sum_{\ell=0}^{n-1} \frac{\ell+1}{n} \frac{(n-1)!}{(n-1-\ell)! \ell!} p^{\ell} (1-p)^{n-1-\ell} = p \frac{n-1}{n} \sum_{\ell=0}^{n-1} \left[\frac{\ell}{n-1} + \frac{1}{n-1} \right] \frac{(n-1)!}{(n-1-\ell)! \ell!} p^{\ell} (1-p)^{n-1-\ell} = p^2 \frac{n-1}{n} +$$

Institute of Economic Studies,
Faculty of Social Sciences,
Charles University in Prague

[UK FSV – IES]

Opletalova 26
CZ-110 00, Prague
E-mail : ies@fsv.cuni.cz
<http://ies.fsv.cuni.cz>

Institut ekonomických studií
Fakulta sociálních věd
Univerzita Karlova v Praze

Opletalova 26
110 00 Praha 1

E-mail : ies@fsv.cuni.cz
<http://ies.fsv.cuni.cz>

Disclaimer: The IES Working Papers is an online paper series for works by the faculty and students of the Institute of Economic Studies, Faculty of Social Sciences, Charles University in Prague, Czech Republic. The papers are peer reviewed. The views expressed in documents served by this site do not reflect the views of the IES or any other Charles University Department. They are the sole property of the respective authors. Additional info at: ies@fsv.cuni.cz

Copyright Notice: Although all documents published by the IES are provided without charge, they are licensed for personal, academic or educational use. All rights are reserved by the authors.

Citations: All references to documents served by this site must be appropriately cited.

Bibliographic information:

Iwasaki I., Kočenda E., Shida Y. (2020): "Institutions, Financial Development, and Small Business Survival: Evidence from European Emerging Markets" IES Working Papers 39/2020. IES FSV. Charles University.

This paper can be downloaded at: <http://ies.fsv.cuni.cz>

Institutions, Financial Development, and Small Business Survival: Evidence from European Emerging Markets

Ichiro Iwasaki^a

Evžen Kočenda^b

Yoshisada Shida^c

^aInstitute of Economic Research, Hitotsubashi University, Tokyo, Japan
Email (corresponding author): iiwasaki@ier.hit-u.ac.jp

^bInstitute of Economic Studies, Charles University, Prague, Czech Republic
Institute of Information Theory and Automation, Czech Academy of Sciences,
Prague, Czech Republic

CESifo, Munich, IOS, Regensburg

^cEconomic Research Institute for Northeast Asia (ERINA), Niigata, Japan

October 2020

Abstract:

In this paper, we traced the survival status of 94,401 small businesses in 17 European emerging markets from 2007–2017 and empirically examined the determinants of their survival, focusing on institutional quality and financial development. We found that institutional quality and the level of financial development exhibit statistically significant and economically meaningful impacts on the survival probability of the SMEs being researched. The evidence holds even when we control for a set of firm-level characteristics such as ownership structure, financial performance, firm size, and age. The findings are also uniform across industries and country groups and robust beyond the difference in assumption of hazard distribution, firm size, region, and time period.

JEL: C14, D02, D22, G33, M21

Keywords: small business; institutions; financial development; survival analysis; European emerging markets

Acknowledgements: This research work was financially supported by the Japan Society for the Promotion of Science (Grant Nos. 19KK0036; 20H01489), the Japan Securities Scholarship Foundation, the Nomura Foundation, and the Mitsubishi Foundation (Iwasaki); and the GAČR Grant No. 20-17044S (Kočenda). We would

like to thank Michael Fritsch (Editor), Roman Horváth, and two anonymous referees for their helpful comments and suggestions. We are also grateful to Eriko Yoshida for her research assistance and to Tammy Bicket for her editorial assistance. The usual disclaimer applies.

1 Introduction

Small and medium enterprises (SMEs) are the backbone of the economy in Europe: in the EU alone, approximately 23 million SMEs represent 99% of all businesses and provide nearly 70% of all private sector employment.¹ Yet, the ability of SMEs to survive in the market is challenged by harsh conditions brought about by recent economic developments, in the form of the global financial crisis (GFC), the European sovereign debt crisis, and the Corona crisis, whose impacts have yet to be evaluated.² In times of heightened uncertainty, financial flows and the internal stability of firms are often disrupted, and two sets of external factors exist that might improve the survival chances for some (Alfaro and Chen, 2012; Ono and Uesugi, 2014). First, it is the quality of institutions that affects the business environment, enforcement of the law, and economic freedom (North, 1990; Porter, 1998; De la Croix and Delavallade, 2009; Che et al., 2017; Baumöhl et al., 2019). Second, it is the level of financial development that impacts the operational quality of the economy in which firms operate and improves conditions for entrepreneurs in terms of risk, monitoring, and discipline (Musso and Schiavo, 2008; Tsoukas, 2011; LiPuma et al., 2013; Kelly et al., 2015; Kočenda and Iwasaki, 2020). As there are substantial differences in institutions and financial development globally, the weight of both external factors is likely even more important in emerging markets than in developed economies (Chari et al., 2010; Fan et al., 2011; Urbano et al., 2019). In our analysis, we assess the impact of institutions and financial development on the survival of small firms in emerging European economies, as no literature tackles this issue yet. In this introduction, we intentionally bring forth the key facts and evidence from the related literature (rather than its formal review), as this arrangement provides better perspective on our further motivation.

¹ https://ec.europa.eu/growth/smes_en. Similar pattern can be observed in the U.S. where 28 million small businesses account for 99.7% of all firms. Moreover, family firms that are often in the form of the SMEs constitute the pillars of most countries' economies (La Porta et al., 1999).

² SMEs were among those firms facing very hard challenges, and large numbers had to exit the market—the uncertainty regarding the economic policies and regulations in which enterprises operate has increased dramatically since the outbreak of the GFC. As a result, SMEs were probably the hardest hit economic units due to their limited capacity to absorb large shocks as well as their sensitivity to uncertainty in the economic environment (Potter and Thompson, 2011).

Why do we analyze emerging European economies? Three decades ago, a massive wave of political, economic, and social changes accompanied the demise of the command economic system and the advent of the market economy in Central and Eastern Europe (CEE). The microeconomic part of the transition was based on the privatizations of state enterprises and the emergence of new private firms, the majority of which were SMEs (Iwasaki and Mizobata, 2018). Economic reforms in the CEE countries aimed to establish competitive markets and to create or reform supporting institutions (Aussenegg and Jelic, 2007; Kočenda and Hanousek, 2012). However, large numbers of firms entering the market at that time soon faced difficulties with surviving (McDermott, 2004). Moreover, uneasy transformation process along with ensuing GFC negatively impacted firms' performance and consequently also their survivability (Estrin et al., 2009; Hanousek et al., 2015; Baumöhl et al., 2019; Iwasaki and Kim, 2020).

In many respects, firms in CEE countries faced greater challenges than those in developed European countries. Economic reforms were stressful, and advancements in building institutions were not seen as a priority, since they also had the potential to reduce the power of local governments (Bateman, 2000). This seems unfortunate, because high-quality institutions are indispensable for economic growth, as they facilitate efficient transactions among firms (North, 1993). Since greater fairness and greater protection of property rights help to reduce firm exit rates, these institutional factors are particularly important in less-developed markets (Desai et al., 2005). Drawing from more recent research, there is ample evidence that the quality of the institutional environment strongly affects entrepreneurship and entrepreneurial behavior (Urbano et al., 2019). Actually, Boudreaux and Nikolaev (2019) argued that quality market-oriented institutions positively affect risk taking, experimentation, rates of innovation, and net business formation. All of these aspects are then likely to impact firm survival, too. The important mechanism through which institutions propagate can be characterized by the transactional costs approach (Acs, 2006; Acs and Szerb, 2007; Acs et al., 2008)—high-quality institutions reduce firms' costs associated with the regulatory burden and uncertainty. To achieve that, institutions ensuring the protection of the law, democracy, and national governance or those aiming to control corruption can be hypothesized to reduce the regulatory burden and uncertainty, thus increasing

firms' probability of survival. An empirical link between firm survival and quality of institutions has been shown by Baumöhl et al. (2019) for large European firms, but until now, no evidence has been available regarding SMEs. Hence, in this paper, we empirically test the following null hypothesis: *Institutional quality does not affect the survivability of small businesses in European emerging markets.*

For firm survival, financial development in a country plays a vital role, as evidenced below. From this perspective, financial development is critical since emerging economies possess less-developed financial markets in general. Their development naturally varies among CEE countries, and the differences can be expected to affect the behavior of firms and their owners. More-developed financial markets exhibit a greater capacity to enforce capital market discipline, and entrepreneurs may perceive them as better insurance against the risk of asset expropriation and contract repudiation (LiPuma et al., 2013). In general, weak financial development is recognized as negatively affecting economic performance and augmenting instability (Henisz and Williamson, 1999). However, literature examining the causal relationship between country-level financial development and firm survival is scarce. Still, based on a set of Asian firms, Tsoukas (2011) showed that improvements in financial development can be linked to improved survival chances in general, but small firms benefit to a lesser extent than larger firms. In the EU context, a link between financial development and firm survival can be documented only imperfectly. Schäfer and Talavera (2009) reported that financial constraints exhibit a negative effect on the survival probability of German entrepreneurs. Furthermore, Musso and Schiavo (2008) obtained similar results from a survival analysis of the French manufacturing industry, which is largely composed of SMEs. Finally, Farinha et al. (2019) documented that SMEs borrowing from banks exposed to funding outflow tend to fail in Portugal. On the other hand, Kočenda and Iwasaki (2020) showed that sounder financial development can be directly linked to the improved survival of banks in CEE economies. Still, there is no such evidence for SMEs in CEE, and the scarcity of literature further motivates our approach. In order to assess the impact of financial development, we also test the following null hypothesis: *Financial development does not influence the survivability of small businesses in European emerging markets.*

In our empirical assessment, we adopt the following research strategy: We analyze the impact of the quality of institutions based on a set of variables that characterize the rule of law, degree of democracy, development of national governance and civil society, and level of corruption control. Further, we assemble a rich set of variables that representatively characterize the extent of financial development in each country; details on institutional quality and financial development variables are provided in the data section. With both types of measures, we are able to control for cross-country differences due to the heterogeneity of economic, social, and political features. We also perform a principal component analysis to create comprehensive indices of the institutional quality and financial development (i) to analyze the aggregate impact of both types of external factors without omitting any particular measure and (ii) to avoid correlations existing among different institutional indices as reported by Fidrmuc et al. (2017).

In our analysis, we further employ firm-specific factors and industry-level fixed effects to effectively control for their impact on firm survival. Specifically, we account for key firm-specific characteristics such as firm size and age, ownership structure, and financial performance. These factors are found to affect the general ability of a firm to survive (Alfaro and Chen, 2012; Kočenda and Hanousek, 2012; Baumöhl et al., 2020; Iwasaki and Kim, 2020). At the same time, these factors, especially the size and age of the firm associated with the ability to attract financial resources, also affect small business failures, thus are recurrently examined as control variables in prior studies. In fact, Audretsch (1991), Persson (2004), Box (2008), Esteve-Pérez and Mañez-Castillejo (2008), Cader and Leatherman (2011), Ebert et al. (2019), and Rico et al. (2020) repeatedly verified that firm size and age are closely related to the survival of small businesses beyond difference in the periods, industries, and regions. Furthermore, based on empirical evidence from the Irish firm data, Kelly et al. (2015) pointed out the existence of the nonlinear survival bias that older companies are less likely to become insolvent and have greater resiliency in a recessionary period. In recent literature, Cucculelli and Peruzzi (2020) studied the post-crisis survival of Italian companies and showed that SMEs have a higher probability of defaulting. They also found that poor financial performance, family ownership, and smaller firm size make it difficult for SMEs to adopt default-reducing strategies, leading to the end of business operations.

SMEs are vulnerable, particularly during economic turbulence, because they have a limited capacity to downsize and diversify their activities, and they face severe financial conditions. Moreover, Mata and Portugal (2004) showed a sharp difference between domestic and foreign firms in the processes of entry, survival, and post-entry growth.

As a departure point in our analysis, we specified testable (null) hypotheses stating that country-level institutional quality and financial development do not affect the survivability of small businesses in European emerging markets. We assessed the hypotheses with a quantitative tool of the Cox proportional hazards model and estimate the survival probabilities related to specific survival determinants; in doing so, we proceeded in the same way as Esteve-Pérez and Mañez-Castillejo (2008) in their SME analysis or Baumöhl et al. (2019) for large firms.

Our empirical contribution to the existing literature on firm survival is based on analyzing almost 94,000 SMEs from 17 European emerging markets. Our key results show that institutional quality is an important factor positively affecting firm survival, but its effect is less pronounced for smaller firms. The same evidence is obtained with respect to financial development, but the variation of the impact between smaller and larger SMEs is less pronounced. Further, we show that differences in ownership structure are also behind different impacts on survival probability. Financial performance and firm age are consistently linked to improved survival, while the impact of firm size seems to be industry specific. Otherwise, our results are robust across indicators of institutional quality and financial development, country groups, industries, time periods, and assumptions on survival distributions.

The remainder of the paper is organized as follows. Section 2 describes the data and applied methodology. In Sections 3 and 4, we bring forth extensive and detailed results. Section 5 is the conclusion.

2 Data and Methodology

The use of the Bureau van Dijk (BvD)'s Orbis database enables us to quantitatively investigate what factors affect the survival probability of small businesses and to what extent. We obtained detailed information on 94,401 companies in Central and Eastern European emerging markets. The small companies extracted from the database meet the following three conditions: (1) they were active at the end of 2006; (2) their survival

status can be traced until the end of 2017—we identified 60,341 companies that continued operating for the entire period of observation; (3) the number of employees is no more than 50, i.e., the firms meet the 2003 European Commission’s definition of SMEs with less than 50 employees.³ Using the compiled dataset, we identify which companies failed and when during the period from 2007–2017.⁴ In this paper, we treat bankruptcy as a business failure event. Our dataset covers four regions, namely (a) Central European (Czech Republic, Hungary, Poland, and Slovakia), (b) Eastern European (Bosnia and Herzegovina, Bulgaria, Croatia, Macedonia, Montenegro, Romania, and Serbia), (c) Baltic (Estonia, Latvia, and Lithuania), and (d) former Soviet Union (FSU) countries (Moldova, Russia, and Ukraine).

As discussed in the introduction, the explanatory factors in which we are most interested are institutional quality and financial development. For that, we compile a set of country-specific variables reflecting these two types of external factors, and we complement it with firm-level dependent variables to control for firm-level characteristics.

Following the example of Baumöhl et al. (2019), we use the institutional quality (IQ) in 2006 as the initial condition of our analysis, and we measure it with five different indices. The *Rule of Law* of the Worldwide Governance Indicators reflects how the population perceives the quality of the enforcement of law and order in a country. Further, from Freedom House’s *Nations in Transit* (Freedom House, 2018), we borrowed measures of *Democracy*, *National governance*, *Civil society*, and *Corruption control*. *Democracy* is an average aggregate score of all ratings listed in *Nations in*

³ The European Commission (2003) defined small and medium-sized enterprises (SMEs) as companies with less than 250 employees that operate independently from larger companies. To be classified as an SME, a company should have an annual turnover of maximum €50 million or an annual balance sheet of maximum €43 million. There are three types of SMEs: micro-SMEs, with less than 10 employees; small SMEs, with 10–49 employees; and medium-sized SMEs, with 50–249 employees.

https://ec.europa.eu/growth/smes/business-friendly-environment/sme-definition_en

⁴ The Orbis database keeps all entry firms with their legal status—including bankrupted companies—without any time limitation unless local data providers stop supplying company information. We carefully checked the original source of our data and detected that in 2017 (the end of our research period), data are available for more than 95% of firms registered in the 2006 archive. Hence, only a very limited number of firms were dropped from the Orbis database during the observation period of 2007–2017.

Transit—beginning with the 2004 edition. *National governance* is an index that considers the degree of democracy and the stability of the governing regime. We employ the measure of *Civil society* to capture the degree of development and maturity of a society, considering nongovernmental and social organizations, the political involvement of the population, and political extremism in a country. Last, we introduce the index of *Corruption control* to capture the people’s perception of the extent of corruption, the economic interest of policymakers, measures against it, and laws regarding financial disclosure and conflicts of interest. **Appendix 1(a)** shows the country score of each IQ variable. We observe that the Central European and Baltic countries have the highest IQ scores, while Russia, Ukraine, and Eastern European countries suffer from inferior institutions. As shown in **Appendix 1(b)**, these IQ variables have strong positive correlations with each other (findings are in line with those of Fidrmuc et al. (2017)) and, therefore, we do not use them simultaneously in estimations.

Earlier studies argued that financial development and the presence of alternative external financing sources contribute to the growth and reduced failure probability of businesses (Musso and Schiavo, 2008; Gagliardi, 2009; Tsoukas, 2011). Thus, in our study, we use multiple indicators that capture differences in financial development among countries. Specifically, the financial development (FD) indices measure the depth of the financial system in terms of its diversity, size, and liquidity. Modern financial institutions consist of banks and various types of financial (nonbank) institutions; at the same time, in financial markets, stocks, bonds, and other equities are traded. Hence, a single indicator is not sufficient to assess the diversity and depth of a financial system (Sahay et al., 2015; Svirydzenka, 2016).

Therefore, we have adopted five variables to capture the development of financial systems in European emerging markets. The first three variables are taken from the World Bank. *Liquid liabilities* represent the ratio of broad money (M3) to GDP and reflect the relative size of the financial intermediation.⁵ Then, we have used two measures that reflect the extent of the financial market in terms of private financing and

⁵ Broad money (M3), as defined by the World Bank, consists of cash and electronic currency; various types of deposits, certificates, and securities repurchase agreements (M0 + M1 + M2); commercial paper; and shares of mutual funds or market funds held by residents and others.

banking: *Private credit* (defined as a percentage ratio of the private sector domestic credit to a country's GDP) and *Bank assets* (defined as percentage ratio of deposited money bank assets to central bank assets).⁶ Both variables measure how financial resources are accessible to firms (Baltagi et al., 2008; Tsoukas, 2011), since, for example, bank credit is the essential financing source, especially for small and medium-sized firms (Gagliardi, 2009). Furthermore, we have introduced two variables that characterize the financial market: *Market capitalization*, as a ratio to GDP, and *Stock trading volume*, as a ratio to market capitalization; both variables are taken from the EBRD's structural and institutional change indicators. They represent the depth of the financial market in terms of size and degree of activity. As many SMEs rely on self-funding or borrowing from friends or relatives in emerging markets (Bukvič and Bartlett, 2003), better financial market development will ease their financial burdens. However, one can also expect that the effect of market development varies among firms, as Tsoukas (2011) argued that large firms enjoy better access to the financial market as compared with small firms.

In contrast to IQ measures, FD variables are not strongly correlated with each other. **Appendix 2** suggests that financial institutions and markets do not develop simultaneously, and each country has its own form of financial system. In fact, *Market capitalization* and *Stock trading volume* are negatively associated with some other variables, ranging between maximum values of -0.52 and 0.45. Central European countries are generally equipped with a more developed indirect financing system, but the Czech Republic and Slovakia have uniquely developed financial intermediation systems and have higher *Liquid liability* scores. The backwardness of banking institutions (*Bank assets*) is remarkable in Russia, Moldova, and Romania. Moreover, other economies are financially underdeveloped, though the deepening of the Russian financial market can compete with that of developed economies in terms of *Market capitalization* and *Stock trading volume*. In sum, it is hard to find regional specificity in financial systems.

⁶ In related literature, a ratio of private credit by deposit money banks to a country's GDP is recurrently used for analysis. However, we do not use this variable in our estimation, as its correlation with *Private credit* is quite strong (more than 0.9); therefore, its use generates almost the same estimation results as those of *Private credit*.

All IQ and FD variables are standardized to have a mean of zero and a standard deviation of one, ensuring comparability with each other. We first examine the impact of each index individually. Then, we introduce *Comprehensive indices* to assess the institutional quality of the country and its degree of financial development. The use of principal component analysis allows us to make general assessments of IQ and FD without missing any particular factors (Fidrmuc et al., 2017). According to the eigenvectors of the first components reported in **Appendix 3**, higher values of the *Comprehensive IQ index* indicate better institutional quality, while higher values of the *Comprehensive FD index* represent more advanced indirect financial systems. We confirm that the first components of IQ and FD explain more than 94.6% and 67.8% of all variances, respectively.

Additionally, we introduce a set of control variables to assess the impact of firm-specific factors on survival. We refer to factors impacting firm growth, as they are potentially related to a company's survival probability. Though earlier studies have explored the roles of ownership structure and concentration, legal form, and corporate governance in firm survival (Baumöhl et al., 2019), we consider these factors less relevant for small businesses. Hence, we include only ownership structure, corporate performance, and size and age of the company. *State ownership* and *Foreign ownership*, as dummy variables, take a value of 1 if the company is under state or foreign ownership. The continuing existence of state ownership in SMEs is due to long-lasting ownership positions by the state documented in earlier literature (Kočenda, 1999; Hanousek and Kočenda, 2008). Furthermore, *Profit margin*, defined as profit before tax/operating revenue, and *Solvency ratio*, defined as shareholder funds divided by total assets, serve as market-adjusted values of the company's performance indicators. Finally, we examine the impact of the size and age (and age squared) of the firm, as it is generally thought that larger and older firms are more likely to survive (Geroski, 1995; Tsoukas, 2011; Rico et al., 2020). **Table 1** shows the definitions and descriptive statistics of variables used in later empirical estimations.

The main objective of our analysis is to assess impact of institutions, financial development, and key firm specific factors on small business survival – for that, we employ the Cox proportional hazards model (Cox, 1972), the approach that begins with the following survival function:

$$S(t) = \Pr(T > t) = \int_0^\infty f(t)dt.$$

Here, survival function $S(t)$, described as a cumulative distribution function of probability density $f(t)$, gives the probability that the duration of firm operations T exceeds a specific time t . It takes a value of one at the initial time point ($t = 0$) and goes down to zero, according to increased t . It is known that the survival function simultaneously produces its reverse cumulative distribution function of hazard function $h(t)$. It gives the instantaneous probability per time unit, that is, a conditional failure rate that a company ceases operations during a given time interval between t and $t + \Delta t$:

$$h(t) = \lim_{\Delta t \rightarrow 0} \frac{\Pr(t \leq T < t + \Delta t | t \leq T)}{\Delta t}.$$

Two functions have the following relationship:

$$S(t) = \exp\left\{-\int_0^t h(u)du\right\}, \quad h(t) = -\frac{S'(t)}{S(t)}.$$

The hazard function increases from zero to infinity over time.

Let x_i and β_i denote covariates for the i -th firm and their parameters, and let hazard function take the Cox proportional hazards model, so that we have the following equation:

$$h(t|x_{it}, \dots, x_{in}) = h_0(t)\exp(\beta_1 x_{i1} + \dots + \beta_n x_{in}), \quad h_0(t) > 0.$$

$h_0(t)$ is the baseline hazard function that considers changes of firm failure risk over time when all covariates take a value of zero. Because the baseline hazard function is a semiparametric model and corresponds to the model that has no covariate, we do not have to specify it nor make any assumption regarding the survival distribution. Additionally, the second term in the above equation, the linear sum of products of parameters β_i and time-dependent variable x_i , enable us to measure the impact of how the covariates affect the survival time of a company without specifying the baseline hazard function. The use of a proportional hazard model also allows us to interpret the estimation results easily, as shown below.⁷

⁷ In order to address concerns regarding reverse causality, authors typically estimate their models using financial development indicators in the initial year of the estimation period. This is exactly the approach we take, and we employ the values from 2006 as predetermined

Following the recent practice in survival literature (Esteve-Pérez et al., 2004; Taymaz and Özler, 2007; Iwasaki and Kočenda, 2020; Baumöhl et al., 2019, 2020), we estimated a linear model of the Cox proportional hazards function through the maximum likelihood method, which takes the following logarithmic form:

$$\ln h(t|x_{it}, \dots, x_{in}) = \ln h_0(t) + \sum_{j=1}^n \beta_j x_{ij}.$$

In the above specification, we introduce country-level variables of institutional qualities and financial development as well as firm-level control variables as covariates x . During estimation, we adopted the Breslow approximation to deal with the right censoring that refers to firms that survived the entire observation period, since we identified 60,341 companies that continued operating for the entire observation period.

In tables with our results, we present each parameter β in the form of a hazard ratio, due to its straightforward interpretation—a hazard ratio indicates how the probability of a firm exiting the market is multiplied when a specific covariate x (e.g., a firm survival determinant in the form of an independent variable) changes by one unit. If an estimate is over 1, we may consider a determinant (covariate x) to be a risk factor, increasing the probability of a firm’s exit. Similarly, if an estimate is below 1, such a determinant (covariate) is considered to be a preventive factor improving a firm’s probability of staying in business. Statistically significant estimates below 1 are economically more significant preventive factors the farther they are from 1; the opposite applies to estimates larger than 1.

The following example can serve as a useful illustration of how to interpret the economic significance of results. A statistically significant estimate of a hazard ratio denotes the percent of change in survival probability by a one-unit change of the covariate in question.⁸ If we have two estimates of hazard ratios (of two covariates)

variables both for the country-level and firm-level covariates to avoid any endogeneity issues. This is also a methodological standard of the survival analysis based on the Cox hazards model. An alternative approach in the literature is to use annual values of financial development indicators to avoid significant loss of information. We do not adopt this alternative approach, as it does not fit into the methodology we use for our analysis, since the basic aim of survival analysis is to test whether an initial condition is a good predictor of the event in question.

⁸ Statistical significance is assessed via the z statistics reported in parentheses beneath the hazard ratios. For all estimations, we also report the results of the Wald test and show that all standard regression coefficients are statistically different from zero.

with values of 0.9 (covariate A) and 0.7 (covariate B), then a unit improvement in these covariates is linked to a 10% (covariate A) and 30% (covariate B) increase in the probability of firm survival, respectively (because $1 - 0.9 = 0.1$, and $1 - 0.7 = 0.3$). Since covariate B is associated with higher survival probability, it is economically more significant than is covariate A.

3 Univariate Tests of Small Business Survival by Region, Industry, Institution, and Financial Development

Before proceeding to the survival analysis, we briefly overview the survival dynamics of small businesses in European emerging markets. We also carry out univariate analyses focusing on region, industry, institutional quality, and financial development.

Tracing the survival status of the 94,401 companies by the end of 2017, we found 34,060 failure cases: accordingly, the exit rate for the entire period was equal to 38.2% (**Table 2**). It is noteworthy that the exit rate of small businesses in our dataset is much higher than that of business in general. Baumöhl et al. (2019) reported that the exit rate of companies (including small businesses) in 15 European emerging markets from 2007–2015 was 24.7%. We had 28,813 failed companies in 17 economies over the same period; thus, the exit rate is 30.5%. In our dataset, the number of failed firms and the annual exit rate show increasing trends, reaching their peaks in 2015. The Nelson-Aalen estimate of the cumulative hazard function also increased to 0.468 in 2017 (**Figure 1**), implying that around half of operating companies went bankrupt in the next period.

Now we turn to the regional and sectoral aspects of small business failure. In our dataset, the companies located in the former Soviet Union (FSU) and Eastern European countries account for 65.5% and 18.4%, respectively. In contrast, Central European and Baltic countries occupy relatively a small portion of the dataset. **Table 2** clearly shows a wide variation in the exit rates among regions. The exit rate of FSU countries is 45.2%, which is more than two times higher than that of Central European countries. Eastern European and Baltic countries lie between the above two regions. These findings suggest that small businesses are facing the most competition in FSU countries. In contrast, Central European countries enjoy rather more preferable environments that encourage small business development.

In terms of industry structure, service companies dominate in the dataset, accounting for 57.6%, followed by mining and manufacturing (23.1%) and construction (13.9%) sectors. The remaining share (5.4%) corresponds to the primary industry (agriculture, forestry, and fishing). Sectoral variations in firm exit rates are relatively small, ranging from 32.3% in the primary sector to 44.2% in the construction sector.

The Kaplan-Meier survival curves in **Figure 2** confirm the above description of regional and sectoral variations in small business survival. The results for log-rank tests in the figure reject the null hypothesis that there is no difference in survival probability among regions and sectors.

We further performed the univariate test and compared the survival functions of countries, focusing on institutional quality and financial development. We divide countries into two groups using the median of each IQ and FD index as reference criteria: countries with superior or inferior institutional qualities; financially developed or less-developed (developing) countries. As is evident from **Figure 3**, Kaplan-Meier survival curves with better institutional qualities lie below those with inferior institutions, leading to the consideration that institutions have a positive relationship with the survival probability of small businesses in European emerging markets. Interestingly, gaps between curves are quite extensive between groups in *National governance* and *Corruption control* with larger chi-square statistics. Meanwhile, the relationship between survival functions and the extent of financial development is ambiguous. Looking at *Liquid liabilities*, *Private credit*, and *Bank assets*, survival curves with higher scores lie above those with lower scores, bringing about the expectation that the development of financial institutions will extend throughout the duration of business operations. In contrast, *Market capitalization* and *Stock trading volume* are likely to have adverse effects on survival time. Thus, in European emerging markets, small businesses possibly experience great survival competition in countries with advanced financial markets and developed capital markets. Both in terms of institutional quality and financial development, we observe that a higher *Comprehensive index* score reduces the risk of company failure.

4 Multivariate Survival Analysis

This section estimates a Cox proportional hazards model in a multivariate setting. The baseline estimation results are reported in **Tables 3** and **4**.

Table 3 shows that all *IQ* indices and the *Comprehensive IQ index* have statistically significant effects of reinforcing a firm's survivability. Thus, improved institutional qualities are strongly associated with a business's lower risk of failure. In line with the findings of Baumöhl et al. (2019), our study emphasizes the particular importance of institutional qualities for small businesses. Results here revealed that small firms are subject to institutional attributes more than companies in general and that *Democracy* and *Civil society*, among others, have the greatest effects and increase the survival probability of small businesses by nearly 25%. Among the single IQ factors, the level of *Democracy* exhibits the largest economic significance among the reset of factors, albeit their impact seems to be of similar.

When looking at **Table 4**, which introduces FD variables, we see a complicated picture. Factors reflecting deepening financial institutions—*Liquid liabilities*, *Private credit*, and *Bank assets*—are shown to have statistically significant effects that enhance firm survival; among these, *Liquid liabilities* exhibits the largest economic significance by far, as it improves a firm's probability of survival by about 22%. This finding goes against that of Tsoukas (2011), where the development of banking intermediation in Asian countries was found to further bank-dependent firm management and increase the risk of failure. However, we believe that the discrepancy stems from differences in financial systems. Bukvič and Bartlett (2003) provided supporting evidence that Slovenian SMEs consider the difficulties associated with banking and credit as the more severe financial barriers obstructing business expansion. Mc Namara et al. (2017; p. 123) also argued that the “European financial system can be described as strongly bank-based, where the significant reliance on bank finance for SMEs reinforces the importance of countries' lending infrastructure in the capital structure of SMEs.” This is a stance that corroborates our result that shows the beneficial impact of financial development related specifically to the banking industry.

In contrast, *Market capitalization* and *Stock market volume*, as variables corresponding to the depth of financial markets, take values higher than one and are

statistically significant. From this, we expect that financial development, especially in capital markets, forms an increasingly competitive environment and makes it harder for small businesses to continue operations. However, one should note that market capitalization indirectly provides information regarding the extent of large and listed companies in the economy. Its higher level, thus, depicts less room for SMEs in the economy, in terms not of their numbers but of their economic capacity. Furthermore, it is worth mentioning that stock markets in the CEE region were established primarily as vehicles connected to mass privatization schemes and, thus, in the 2000s, they still substantially differed from mature Western stock markets in terms of capitalization, information processing, or as an alternative sources of financing (Hanousek et al., 2009). Hence, the negative impact of market capitalization on survival probability might not come as a complete surprise. Since the measures of market capitalization and stock trading volume are, to an extent, substitute measures (with a correlation of 0.32), a similar analogy can be drawn for the latter indicator as well.

Overall, the estimates of the IQ and FD variables in **Tables 3** and **4** prove that both institutional quality and financial development have been very important for keeping small businesses alive in European emerging markets during the recent period. In fact, a one-point increase in the *Comprehensive IQ* and *FD indices* reduces the risk of business failure in these economies by about 10%. Despite the similar impact of both measures, the aggregate institutional quality seems to produce an effect of marginally stronger economic significance than that of the financial development. When we take into account the remarkable gap between 17 countries in terms of both *IQ* and *FD* indices, as shown in **Appendix Tables 1** and **2**, improving institutional quality and financial development is an effective policy measure that protects SMEs from exogenous macroeconomic shocks.⁹

⁹ In our paper, we accentuate the role of two “macro” dimensions, namely, institutional quality and financial development. In order to deal with the omitted variable bias, we also considered other macro factors, namely GDP growth rate, CPI annual average, GDP per capita, population size, and current account to GDP. All factors produced statistically significant hazard ratios, with the exception of the current account to GDP (not reported). These additional macro variables impact the probability of firm survival within a range of 1–9%. Hence, their economic significance is decisively smaller than that of individual characteristics of institutional quality and financial development reported in Tables 3 and 4. The use of a three-year average (2004–

In addition to the baseline estimations, we also performed estimations by sectors. We found that the results shown in **Table 5** well coincide with the results shown in **Tables 3** and **4**. Actually, the *Comprehensive IQ* and *FD indices* significantly increase firm survivability in all sectors. Hence, we expect that the positive effects of institutional and financial development on small business survival prevail beyond sectoral boundaries. We observe that these preventive factors exhibit the highest economic significance in the agriculture, forestry, and fishing sector (columns [1] and [5]), where the hazard ratios of the *Comprehensive IQ* and *FD indices* are 0.75 and 0.83, respectively. These contributing effects are also found in other sectors, but their impact is weaker (columns [2] to [4], [6] to [8]) when compared to that found in the agriculture industry. Our results are consistent with those of Baumöhl et al. (2019), who showed that the quality of institutions becomes the most significant factor preventing business failure in agricultural sectors.

Regarding firm-level variables, we obtained robust results that support previous findings on survival for firms in general, small businesses, as well as those in specific sectors (Musso and Schiavo, 2008; Baumöhl et al., 2019; Iwasaki and Kočenda, 2019; Cucculelli and Peruzzi, 2020; Rico et al., 2020). As Harrell's C-statistic values range between 0.6410 and 0.6780, our estimation models have sufficient predictive power. In **Tables 3** and **4**, dependent variables are highly statistically significant in all models, except for firm size in columns [4] and [6] in **Table 4**. Based on these findings, we conclude that (1) *Foreign ownership* and better corporate performance in terms of *Profit margin* and *Solvency ratio* reduce the failure risk of small businesses. Moreover, the impact of ownership by foreign investors (*Foreign ownership*) exhibits by far the strongest economic significance among all firm-specific variables (coefficients exhibit more than a 30% contributing effect with respect to survival, as their values are 0.67 for IQ and 0.63 for FD indices). Furthermore, (2) The effect of the company's *Age* has a nonlinear and positive relationship with the survival probability (risk-reducing effect). At the same time, (3) *State ownership* and the company's *Size* seem to endanger small

06) also generated similar results. As a result, we focus on the effect of IQ and FD variables to assess the survival of SMEs in European emerging economies.

business survival.¹⁰ As **Table 5** shows, these findings are generally confirmed at the industry level. However, the effects of ownership structure and company size show sectoral variations. Different from business in general, state and foreign ownership is statistically insignificant in the primary sector, and the firm size only affects non-financial services.

It is interesting to note that our findings on the effect of firm size contradict the above-mentioned earlier studies. For example, Esteve-Pérez and Mañez-Castillejo (2008) confirmed its positive effect based on the resource-based theory, using Spanish manufacturing data. Cader and Leatherman (2011), Ebert et al. (2019), and Rico et al. (2020) agreed with Esteve-Pérez and Mañez-Castillejo (2008), based on US, German, and Spanish SMEs. This discrepancy is probably due to our study's limitation in that it examines only small business with no more than 50 employees, whereas their datasets include medium-sized firms too.

5 Robustness Checks

We additionally carried out regressions for robustness checks with respect to the parametric hazard function, limiting the size of the company, clustering the regions, examining differences in time periods, and expanding firm-level control variables.

Table 6 shows the estimation results based on alternative hazard functions. The Weibull survival models in columns [1] and [5] assume that the hazard function is monotonically increasing over time, while the Log-logistic models in columns [2] and [6] are based on the non-monotonic hazard. In columns [3] and [7], we assess the covariates' multiplicative effect with survival time, using the Weibull accelerated failure time. Last, complementary log-log models in columns [4] and [8] use the proportional hazard model, in which the dichotomous dependent variable takes a value of 1 if company failure occurs during the observation period. We obtain estimation results consistent with those of the Cox proportional hazards models. Despite using four different assumptions on distributions, the findings again strongly suggest that institutional and financial development reduces the failure risk of small business.

¹⁰ We also ran regressions introducing the square of the firm size but obtained statistically insignificant results. It follows that firm size does not seem to exhibit a nonlinear relationship with respect to the small business survival probability in European emerging markets.

Furthermore, the estimation results in **Table 7** confirm the above findings, even if we use a subsample of the dataset, dividing companies into two groups according to the median size and age. The failure risks of smaller and larger firms, as well as younger and older firms, are influenced by institutional and financial development in the same way. We notice that the impacts of the IQ and FD indices are somewhat bigger in larger firms than in smaller ones. This finding indicates that even among small businesses, larger firms gain more benefits from better institutions. The conclusion is intuitively in line with the transactional costs approach (Acs, 2006; Acs and Szerb, 2007; Acs et al., 2008), in that high-quality institutions reduce firms' costs associated with the regulatory burden and uncertainty. In line with the economic theory of economies of scale, the reduction in cost associated with the regulatory burden should be greater for larger firms, since their unit costs decrease with scale as firms grow their operations.

Next, we checked the regional variation of the impact of covariates in **Table 8**. The low quality of the institutions and relatively less-developed indirect financial institutions are distinctive features of FSU countries. In contrast, Central European countries develop better institutions and financial intermediation. Using a subsample of our dataset without either region, we can examine firm survivability in relatively developed and less-developed European emerging markets. A subsample without either Eastern European or Baltic countries presumably lies between these two cases. Carrying out regressions, we obtained robust estimation results, even if excluding a particular region. All results provide supporting evidence that the quality of institutions and financial development serve as factors preventing firm failure. We notice the weakest effects of institutional quality and financial development in the subsample without the FSU countries (column [4]) and that without Central Europe (column [5]), respectively. Conversely, we expect that marginal improvement in the institutional quality will have the most substantial impact in FSU firms; the incremental development of indirect financing contributes most to the duration of firm operations in Central Europe. Regarding firm-level variables, we confirmed the expected results, except for *State ownership* in the subsample without FSU countries (columns [4] and [8]) where the coefficient of the variable is statistically insignificant. From this finding, we can conclude that state ownership only affects firm survival in FSU countries.

Furthermore, since the period covered in our paper contains the global financial crisis, we also assessed the potential impact of this important event. For that, we re-estimated the Cox proportional hazards model for different periods, for which we also adjusted the number of analyzed (failed and survived) firms. We opted for this direct approach (i) to keep our model parsimonious and (ii) to provide direct results on the effect of IQ and FD over time. The results are presented in Table 9 and show that coefficients associated with both IQ and FD indices have a relatively small failure-inducing impact that is, however, statistically insignificant during the most severe part of the GFC period (2007–2009), and, for the FD index, until 2011. However, as we get further in time from the GFC, both indices exhibit positive and statistically significant impacts that also gain economic significance since the values of the IQ and FD indices become smaller (columns 2-4, and 7-8, respectively). From the quantitative findings, we infer that the effect of the GFC is only temporary, and for the rest of the period being researched, the quality of institutions and financial development serve as factors that improve the probability of SME survival. The results are consistent with a similar observation by Baumöhl et al. (2019) for large European firms; however, the statistical significance of both IQ and FD indices (Table 9) is much higher than that reported by Baumöhl et al. (2019), suggesting that the business environment characterized by the quality of institutions and financial development is even more important for SMEs than for large companies. From the statistically significant coefficients, we also see that the effect of firm-specific controls is largely time invariant. The exception is the category of *Foreign ownership*, whose impact as a failure-preventive factor is larger during the GFC as compared to a later period. This finding seems to reflect better resilience of the firms with foreign owners during the GFC as well as its smaller impact during the post-crisis period as also documented by Alfaro and Chen (2012).

Finally, we examined whether the expansion of firm-level controls affects the estimation results. For that, we added additional firm-level control variables, which are listed in **Table 1**. We present the results in **Table 10**, where we show that both the stepwise regressions (columns [1] to [3] and [5] to [7]) and the regression with all firm-level control variables (columns [4] and [8]) do not materially affect the estimates of the *Comprehensive IQ* and *FD indices* or the basic set of firm-level characteristics. In

other words, the main findings of this paper are robust even under these amplified model specifications. The results in **Table 10** also reveal that differences in legal forms, listing on the stock exchange, as well as the business network matter for the survival of small businesses in European emerging markets.

6 Conclusions

Post-crisis development left many scars on Europe's economic landscape. Small enterprises were among those facing very hard challenges, and large numbers had to exit the market. In our analysis, we traced the survival status of 94,401 SMEs in 17 Central and Eastern European countries over the period of 2007–2017. Specifically, we examined the impacts of the institutional quality and financial development on the survival probability of small firms in these emerging markets, where, by the end of 2017, a total of 36,060 of 94,401 small businesses had gone bankrupt. In relative terms, the market exit rate in all 17 countries had reached more than 38%. Despite the total toll, remarkable differences in the exit rates were observed between different country groups and industries. Specifically, the risk of management failure is seen to be higher in firms operating in the construction and service industries as compared to the agriculture and mining/manufacturing businesses. Firm survival is also lower in Baltic and FSU states than in Central and Eastern European countries.

Our quantitative survival analysis is based on estimating the Cox proportional hazards model. We show that the institutional quality and the level of financial development exhibit statistically significant and economically meaningful impacts on the survival probability of the SMEs being researched. The evidence holds when we control for a set of standard firm-level characteristics such as ownership structure, financial performance, firm size, and age. From our results, it follows that aggregate improvements in institutional quality can be strongly associated with the lower failure risk in small enterprises in European emerging markets. In terms of specific factors, our results reveal that, especially, higher attained levels of democracy and civil society function as protective factors during uncertainty and are linked with increasing the survival probability of small businesses by nearly 25%.

The impact of financial development on the survival probability of SMEs was found not to be uniform, however. The measures of financial development related to the

banking industry exhibit a positive effect on firm survival, while measures related to capital market development show a negative impact. Both results should be understood against the backdrop of historical development. While the European financial system is chiefly bank based (Mc Namara et al., 2017), the intensity of the banking industry development naturally plays a strong and positive role with respect to SMEs. On the other hand, capital markets in emerging European economies differ from their Western counterparts and cannot yet be considered a full-scale alternative source of financing.

Our results also show that the impact of institutions and financial development varies across countries as well as industries. Economically, the most significant impact is found for firms operating in agriculture and forestry, while, in other sectors, the impact is weaker and relatively equalized. The key observation is that the impact is less pronounced for smaller firms. Hence, even among small businesses, larger ones reap more benefits of better institutions. The conclusion is intuitively in line with the transactional costs approach combined with the economies of scale theory: quality-institutions-initiated reduction in costs associated with the regulatory burden should be greater for larger firms, since their unit costs decrease as firms grow their operations.

The last two decades have brought enormous pressure and distress on SMEs globally. We believe that our analysis not only provides empirical evidence regarding the positive impact of institutions on small business survival but also shows that their economic impact seems to be economically even greater or on par with other firm-specific characteristics. In a nutshell, our findings show that, during periods of heightened uncertainty, factors characterizing the external environment in which small businesses operate do matter more than we usually think.

References

- Acs, Z. (2006). How is entrepreneurship good for economic growth? *Innovations: Technology, Governance, Globalization*, 1(1), 97–107.
- Acs, Z., Szerb, L. (2007). Entrepreneurship, economic growth and public policy. *Small Business Economics*, 28(2–3), 109–122. <https://doi.org/10.1007/s11187-006-9012-3>
- Acs, Z., Desai, S., Hessels, J. (2008). Entrepreneurship, economic development and institutions. *Small Business Economics*, 31(3), 219–234. <https://doi.org/10.1007/s11187-008-9135-9>
- Alfaro, L., Chen, M. X. (2012). Surviving the global financial crisis: Foreign ownership and establishment performance. *American Economic Journal: Economic Policy*, 4(3), 30–55. <https://doi.org/10.1257/pol.4.3.30>
- Audretsch, D. B. (1991). New-firm survival and the technological regime. *Review of Economics and Statistics*, 73, 441–450. <https://doi.org/10.2307/2109568>
- Aussenegg, W., Jelic, R. (2007). The operating performance of newly privatised firms in Central European transition economies. *European Financial Management*, 13(5), 853–879. <https://doi.org/10.1111/j.1468-036X.2007.00400.x>
- Baltagi, B. H., Demetriades, P. O., HookLawc, S. H. (2008). Financial development and openness: Evidence from panel data. *Journal of Development Economics*, 89(2), 285–296. <https://doi.org/10.1016/j.jdeveco.2008.06.006>
- Bateman, M. (2000). Neo-liberalism, SME development and the role of business support centres in the transition economies of Central and Eastern Europe. *Small Business Economics*, 14(4), 275–298. <https://doi.org/10.1023/A:1008170805013>
- Baumöhl, E., Iwasaki, I., Kočenda, E. (2019). Institutions and determinants of firm survival in European emerging markets. *Journal of Corporate Finance*, 58, 431–453. <https://doi.org/10.1016/j.jcorpfin.2019.05.008>
- Baumöhl, E., Iwasaki, I., Kočenda, E. (2020). Firm survival in new EU member states. *Economic Systems*, 44(1), Article 100743. <https://doi.org/10.1016/j.ecosys.2020.100743>
- Box, M. (2008). The death of firms: exploring the effects of environment and birth cohort on firm survival in Sweden. *Small Business Economics*, 31(4), 379–393. <https://doi.org/10.1007/s11187-007-9061-2>
- Boudreaux, C. J., Nikolaev, B. (2019). Capital is not enough: Opportunity entrepreneurship and formal institutions. *Small Business Economics*, 53(3), 709–738. <https://doi.org/10.1007/s11187-018-0068-7>
- Bukvič, V., Bartlett, W. J. (2003). Financial barriers to SME growth in Slovenia. *Economic and Business Review*, 5(3), 161–181.
- Cader, H. A., Leatherman, J. C. (2011). Small business survival and sample selection bias. *Small Business Economics*, 37(2), 155–165. <https://doi.org/10.1007/s11187-009-9240-4>
- Chari, A., Ouimet, P. P., Tesar, L. L. (2010). The value of control in emerging markets. *Review of Financial Studies*, 23(4), 1741–1770. <https://doi.org/10.1093/rfs/hhp090>
- Che, Y., Lu, Y., Tao, Z. (2017). Institutional quality and new firm survival. *Economics of Transition*, 25, 495–525. <https://doi.org/10.1111/ecot.12119>
- Cox, D. R. (1972). Regression models and life-tables. *Journal of the Royal Statistical Society. Series B*, 34(2), 187–220.

- Cucculelli, M., Peruzzi, V. (2020). Post-crisis firm survival, business model changes, and learning: Evidence from the Italian manufacturing industry. *Small Business Economics*, 54(2), 459–474. <https://doi.org/10.1007/s11187-018-0044-2>
- De la Croix, D., Delavallade, C. (2009). Growth, public investment and corruption with failing institutions. *Economics of Governance*, 10 (3), 187–219. <https://doi.org/10.1007/s10101-008-0057-4>
- Desai, M. A., Gompers, P. A., Lerner, J. (2005). *Institutions, capital constraints and entrepreneurial firm dynamics: Evidence from Europe*. NBER Working Paper No. 10165, Washington D.C.: National Bureau of Economic Research.
- Ebert, T., Brenner, T., Brixy, U. (2019). New firm survival: The interdependence between regional externalities and innovativeness. *Small Business Economics*, 53(1), 287–309. <https://doi.org/10.1007/s11187-018-0026-4>
- Esteve-Pérez, S., Mañez-Castillejo, J. A. (2008). The resource-based theory of the firm and firm survival. *Small Business Economics*, 30(3), 231–249. <https://doi.org/10.1007/s11187-006-9011-4>
- Estrin, S., Hanousek, J., Kočenda, E., Svejnar, J. (2009). Effects of privatization and ownership in transition economies. *Journal of Economic Literature*, 47(3), 699–728. <https://doi.org/10.1257/jel.47.3.699>
- European Commission (2003). Commission Recommendation of 6 May 2003 concerning the definition of micro, small and medium-sized enterprises (Text with EEA relevance) (notified under document number C(2003) 1422). *Official Journal of the European Union*, 46 (L 124), 36–41.
- Fan, J. P. H., Wei, K. C. J., Xu, X. (2011). Corporate finance and governance in emerging markets: A selective review and an agenda for future research. *Journal of Corporate Finance*, 17(2), 207–214. <https://doi.org/10.1016/j.jcorpfin.2010.12.001>
- Farinha, L., Spaliara, M.-E. and Tsoukas, S. (2019). Bank shocks and firm performance: New evidence from the sovereign debt crisis. *Journal of Financial Intermediation*, 40, Article 100818. <http://dx.doi.org/10.1016/j.jfi.2019.01.005>
- Fidrmuc, J., Kapounek, S., Siddiqui, M. (2017). Which institutions are important for firms performance? Evidence from Bayesian model averaging analysis. *Panoeconomicus*, 64(4), 383–400. <http://dx.doi.org/10.2298/PAN151015031F>
- Freedom House (2018). *Nations in transit 2018: Confronting illiberalism*. Washington, DC and New York: Freedom House. Available at: <https://freedomhouse.org/report/nations-transit/nations-transit-2018>.
- Gagliardi, F. (2009). Financial development and the growth of cooperative firms. *Small Business Economics*, 32(2), 439–464. <https://doi.org/10.1007/s11187-007-9080-z>
- Geroski, P. (1995). What do we know about entry? *International Journal of Industrial Organization*, 13(13), 421–440. [https://doi.org/10.1016/0167-7187\(95\)00498-X](https://doi.org/10.1016/0167-7187(95)00498-X)
- Hanousek, J., Kočenda, E. (2008). Potential of the state to control privatized firms. *Economic Change and Restructuring*, 41(2), 167–186. <https://doi.org/10.1007/s10644-008-9047-3>

- Hanousek, J., Kočenda, E., Kutan, A. M. (2009). The reaction of asset prices to macroeconomic announcements in new EU markets: Evidence from intraday data. *Journal of Financial Stability*, 5(2), 199–219. <https://doi.org/10.1016/j.jfs.2008.01.003>
- Hanousek, J., Kočenda, E., Shamshur, A. (2015). Corporate efficiency in Europe. *Journal of Corporate Finance*, 32, 24–40. <https://doi.org/10.1016/j.jcorpfin.2015.03.003>
- Henisz, W. J., Williamson, O. E. (1999). Comparative economic organization—within and between countries. *Business and Politics*, 1(3), 261–277. <http://dx.doi.org/10.1515/bap.1999.1.3.261>
- Iwasaki, I., Kim, B-Y. (2020). Legal forms, organizational architecture, and firm failure: A large survival analysis of Russian corporations. *European Journal of Law and Economics*, 49(2), 227–275. <https://doi.org/10.1007/s10657-020-09644-8>
- Iwasaki, I., Kočenda, E. (2020). Survival of service firms in European emerging markets. *Applied Economics Letters*, 27(4), 340–348. <https://doi.org/10.1080/13504851.2019.1616053>
- Iwasaki, I., Mizobata, S. (2018). Post-privatization ownership and firm performance: A large meta-analysis of the transition literature. *Annals of Public and Cooperative Economics*, 89(2), 263–322. <https://doi.org/10.1111/apce.12180>
- Kelly, R., Brien, E.O. Stuart, R. (2015). A long-run survival analysis of corporate liquidations in Ireland. *Small Business Economics*, 44(3), 671–683. <https://doi.org/10.1007/s11187-014-9605-1>
- Kočenda, E. (1999). Residual state property in the Czech Republic. *Eastern European Economics*, 37(5), 6–35. <https://doi.org/10.1080/00128775.1999.11648698>
- Kočenda, E., Hanousek, J. (2012). Firm break-up and performance. *Economics of Governance*, 13(2), 121–143. <https://doi.org/10.1007/s10101-011-0106-2>
- Kočenda, E., Iwasaki, I. (2020). Bank survival in Central and Eastern Europe. *International Review of Economics and Finance*, 69, 860–878. <https://doi.org/10.1016/j.iref.2020.06.020>
- La Porta, R., Lopez-de-Silanes, F., Shleifer, A. (1999). Corporate ownership around the world. *Journal of Finance*, 54(2), 471–517. <https://doi.org/10.1111/0022-1082.00115>
- LiPuma, J. A., Newbert, S. L., Doh, J. P. (2013). The effect of institutional quality on firm export performance in emerging markets: A contingency model of firm age and size. *Small Business Economics*, 40(4), 817–841. <https://doi.org/10.1007/s11187-011-9395-7>
- Mata, J., Portugal, P. (2004). Patterns of entry, post-entry growth and survival: A comparison between domestic and foreign owned firms. *Small Business Economics*, 22(3–4), 283–298. <https://doi.org/10.1023/B:SBEJ.0000022219.25772.ca>
- McDermott, G. A. (2004). Institutional change and firm creation in East-Central Europe: An embedded politics approach. *Comparative Political Studies*, 37 (2), 188–217. <https://doi.org/10.1177/0010414003260978>
- Mc Namara, A., Murro, P., O’Donohoe, S. (2017). Countries lending infrastructure and capital structure determination: The case of European SMEs. *Journal of Corporate Finance*, 43, 122–138. <https://doi.org/10.1016/j.jcorpfin.2016.12.008>

- Musso, P., Schiavo, S. (2008). The impact of financial constraints on firm survival and growth. *Journal of Evolutionary Economics*, 18, 135–149. <https://doi.org/10.1007/s00191-007-0087-z>
- North, D. C. (1990). *Institutions, Institutional Change and Economic Performance*. Cambridge: Cambridge University Press. <https://doi.org/10.1017/CBO9780511808678>
- North, D. C. (1993). Institutions and credible commitment. *Journal of Institutional and Theoretical Economics*, 149(1), 11–23.
- Ono, A., Uesugi, I. (2014). SME financing in Japan during the global financial crisis: Evidence from firm surveys. *International Review of Entrepreneurship*, 12(4), 191–218.
- Persson, H. (2004). The survival and growth of new establishments in Sweden 1987–1995. *Small Business Economics*, 23(5), 423–440. <https://doi.org/10.1007/s11187-004-3992-7>
- Porter, M. E. (1998). Clusters and the new economics of competition. *Harvard Business Review*, 76(6), 77–90.
- Potter, J., Thompson, J. (2011). Government responses to the impact of the global crisis on finance for young and small enterprises. *Strategic Change*, 20(5-6), 145-159.
- Rico, M., Pandit, N. R., Puig, F. (2020). SME insolvency, bankruptcy, and survival: An examination of retrenchment strategies. *Small Business Economics*. (Early View: <https://doi.org/10.1007/s11187-019-00293-z>)
- Sahay, R., Čihák, M., N'Diaye, P., Barajas, A., Bi, R., Ayala, D., Gao, Y., Kyobe, A., Nguyen, L., Saborowski, C., Svirydzenka, K., Yousefi, S. R. (2015). *Rethinking financial deepening: stability and growth in emerging markets*. IMF Staff Discussion Note No. SDN/15/08, Washington D.C.: IMF.
- Schäfer, D., Talavera, O. (2009). Small business survival and inheritance: Evidence from Germany. *Small Business Economics*, 32(1), 95–109. <https://doi.org/10.1007/s11187-007-9069-7>
- Svirydzenka, K. (2016). *Introducing a new broad-based index of financial development*. IMF Working Paper No. WP/16/5, Washington D.C.: IMF.
- Taymaz, E., Özler, S. (2007). Foreign ownership, competition, and survival dynamics. *Review of Industrial Organization*, 31, 23–42. <https://doi.org/10.1007/s11151-007-9144-x>
- Tsoukas, S. (2011). Firm survival and financial development: Evidence from a panel of emerging Asian economies. *Journal of Banking & Finance*, 35(7), 1736–1752. <https://doi.org/10.1016/j.jbankfin.2010.12.008>
- Urbano, D., Aparicio, S., Audretsch, D. (2019). Twenty-five years of research on institutions, entrepreneurship, and economic growth: What has been learned? *Small Business Economics*, 53(1), 21-49. <https://doi.org/10.1007/s11187-018-0038-0>

Table 1. Definitions and descriptive statistics of covariates used in the empirical analysis

Variable group and name	Definition	Descriptive statistics ^a		
		Mean	S.D.	Median
Institutional quality (IQ) variables				
Rule of law	World Bank indicator of the rule of law ^b	0.000	1.000	-0.241
Democracy	Freedom House index of democracy ^{b,c}	0.000	1.000	-0.113
National governance	Freedom House index of national democracy governance ^{b,c}	0.000	1.000	0.000
Civil society	Freedom House index of civil society ^{b,c}	0.000	1.000	-0.138
Corruption control	Freedom House index of corruption ^{b,c}	0.000	1.000	0.174
Comprehensive IQ index	First principal component score of the five IQ variables above	1.271	2.524	1.287
Financial development (FD) variables				
Liquid liabilities	World Bank indicator of liquid liabilities to GDP ^b	0.000	1.000	-0.240
Private credit	World Bank indicator of credit to private sector to GDP ^b	0.000	1.000	-0.210
Bank assets	World Bank indicator of deposit money bank assets to total bank assets ^b	0.000	1.000	0.364
Market capitalization	EBRD indicator of stock market capitalization to GDP ^b	0.000	1.000	-0.201
Stock trading volume	EBRD indicator of stock trading volume to market capitalization ^b	0.000	1.000	-0.241
Comprehensive FD index	First principal component score of the five FD variables above	1.568	1.300	1.753
Firm-level control variables				
State ownership	Dummy for state-owned companies	0.0253	0.1572	0
Foreign ownership	Dummy for foreign-owned companies	0.0270	0.1620	0
Profit margin	Profit margin (%) ^{d,e}	0.3708	2.7697	0.5196
Solvency ratio	Solvency ratio (%) ^{e,f}	0.0217	5.2121	-1.2530
Size	Natural logarithm of total number of employees	3.4517	0.4835	3.5553
Age	Years in operation since the company's establishment	8.6581	6.1433	8
Additional firm-level control variables^g				
Joint-stock company	Dummy for joint-stock companies	0.1250	0.3307	0
Limited liability company	Dummy for limited liability companies	0.6464	0.4781	1
Partnership	Dummy for partnerships	0.1081	0.3106	0
Cooperative	Dummy for cooperatives	0.0295	0.1693	0
Listed	Dummy for listed companies	0.0085	0.0919	0
Gearing	Gearing (%) ^h	66.0779	146.6807	1.8300
Business network	Number of subsidiaries	0.2586	1.7750	0
Business diversification	Number of industries operated according to NACE Rev 2 secondary codes	4.1541	4.2863	3

Notes :

^a Variables from the Rule of law to the Comprehensive FD index computed using country-level data; Variables from State ownership to Age computed using firm-level data

^b Standardized to have a mean of zero and a standard deviation of one (i.e., z score)

^c Computed as 7 minus the value of the original index, which ranges between 1.00 (best) and 7.00 (worst)

^d Computed using the following formula: (profit before tax/operating revenue) × 100

^e Industry-adjusted value based on the method proposed by Eisenberg et al. (1998)

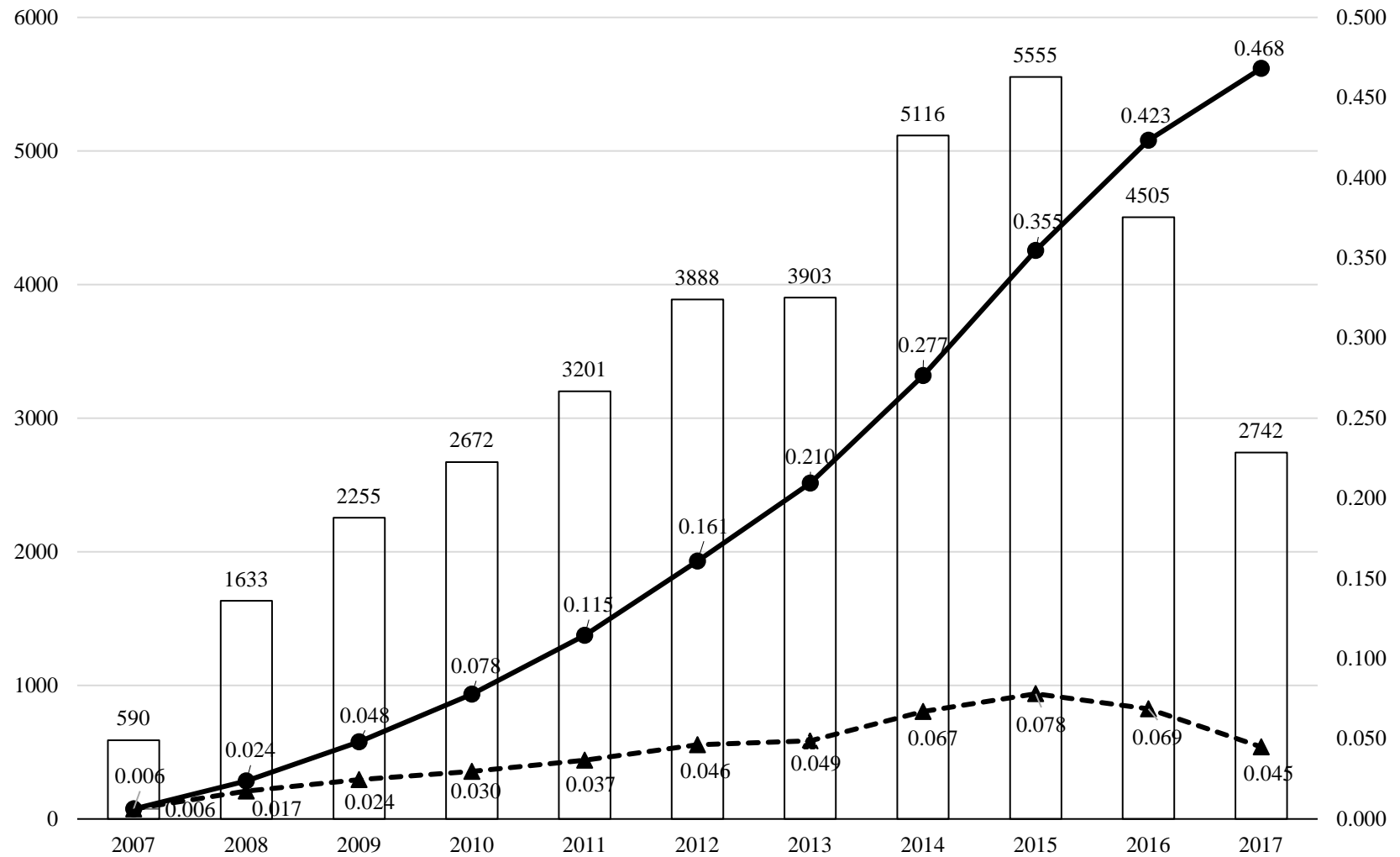
^f Computed using the following formula: (shareholder funds/total assets) × 100

^g Used in Table 9

^h Computed using the following formula: ((non current liabilities + loans) / shareholders' funds) × 100

Source : Covariates from Rule of law to Corruption control and from Liquid liabilities to Stock trading volume were obtained from the website of the World Bank, Freedom House, and the European Bank for Reconstruction and Development (EBRD) (<https://data.worldbank.org/>; <https://freedomhouse.org/>; <http://www.ebrd.com/home>). Comprehensive IQ and FD indices were estimated by the author. Appendices 1 and 2 provide the country score and correlation matrix of IQ and FD variables, respectively. Appendix 3 reports the estimation results of the principal component analysis to produce the Comprehensive IQ and FD indices. Covariates from State ownership to Business diversification were extracted from the Bureau van Dijk (BvD) Orbis database (<https://webhelp.bvdep.com>).

Figure 1. Number of failed firms, exit rate, and Nelson-Aalen estimate of the cumulative hazard function in 17 European emerging markets, 2007–2017



Notes:

- Number of failed firms (left axis)
- Exit rate (right axis)
- Nelson-Aalen estimate of the cumulative hazard function (right axis)

Table 2. Survival status of 94,401 small firms in 17 European emerging markets by country group and industry: 2007–2017

	Number of firms operating at the end of 2006 (A)	Number of failed firms by the end of 2017 (B)	Exit rate (B/A)	Nelson-Aalen cumulative hazard function			
				Coef.	S.E.	[95% confidence interval]	
All 17 European emerging economies	94,401	36,060	0.3820	0.4682	0.0025	0.4634	0.4731
Breakdown by country group							
Central European countries ^a	11,058	2,056	0.1859	0.2026	0.0045	0.1940	0.2115
Eastern European countries ^b	17,348	4,740	0.2732	0.3132	0.0046	0.3043	0.3222
Baltic countries ^c	4,183	1,358	0.3246	0.3817	0.0104	0.3619	0.4027
FSU countries ^d	61,812	27,906	0.4515	0.5795	0.0035	0.5726	0.5864
Breakdown by industry (NACE Rev. 2 section)							
Agriculture, forestry, and fishing (Section A)	5,144	1,663	0.3233	0.3817	0.0094	0.3637	0.4006
Mining and manufacturing (Sections B–E)	21,811	7,151	0.3279	0.3887	0.0046	0.3797	0.3978
Construction (Section F)	13,103	5,791	0.4420	0.5631	0.0075	0.5486	0.5780
Non-financial services (Sections G–J, L–S)	54,343	21,455	0.3948	0.4880	0.0034	0.4814	0.4946

Notes :

^a Czech Republic, Hungary, Poland, and Slovakia

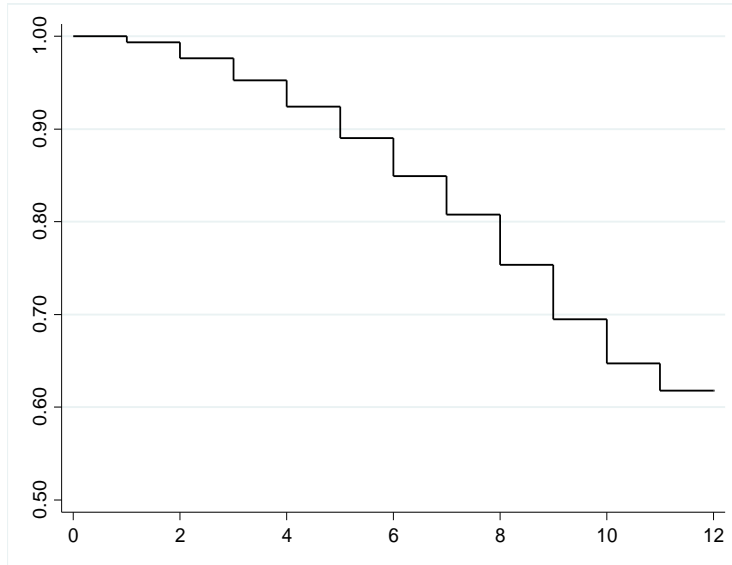
^b Bosnia and Herzegovina, Bulgaria, Croatia, Macedonia, Montenegro, Romania, and Serbia

^c Estonia, Latvia, and Lithuania

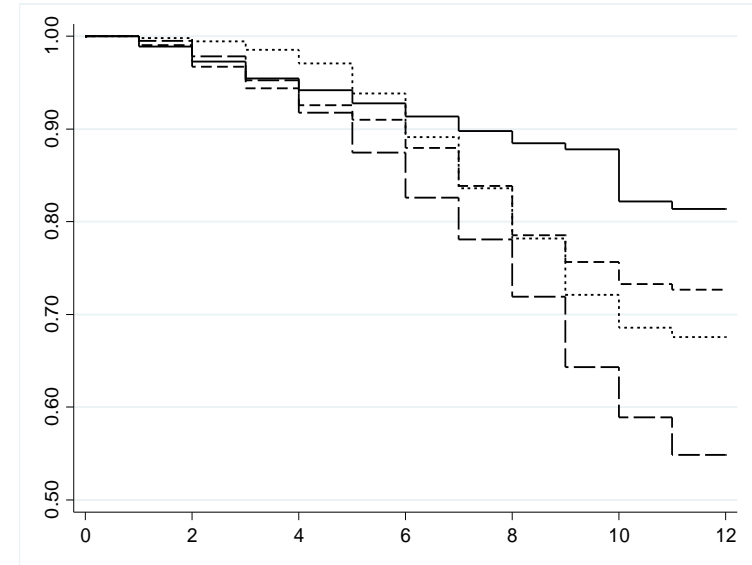
^d Moldova, Russia, and Ukraine

Figure 2. Kaplan-Meier survival function by country group and industry ^a

(a) All 17 European emerging markets

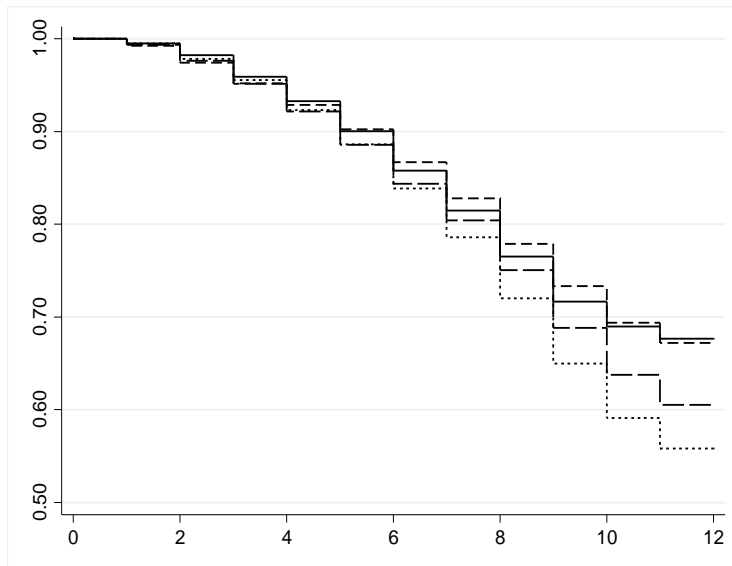


(b) Country group—Central European countries (solid line); Eastern European countries (dashes); Baltic countries (short dashes); FSU countries (long dashes)



Log-rank test for equality of survivor functions: $\chi^2=3518.67, p=0.000$

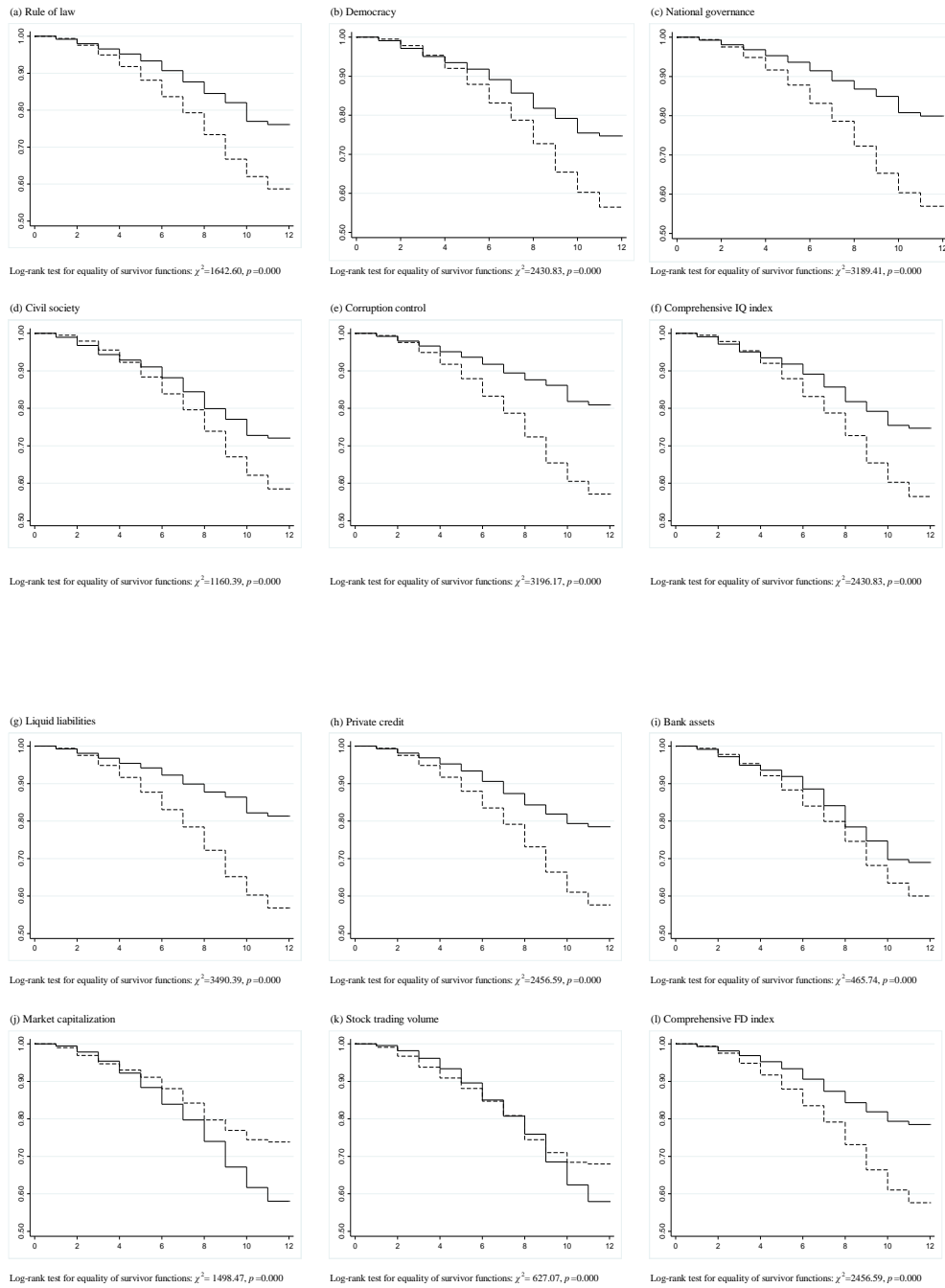
(c) Industry (NACE Rev. 2 section)—Agriculture, forestry, and fishing (Section A) (solid line); Mining and manufacturing (Sections B–E) (dashes); Construction (Section F) (short dashes); Non-financial services (Sections G–J, L–S) (long dashes)



Log-rank test for equality of survivor functions: $\chi^2=513.65, p=0.000$

Note: The industrial classification in Panel (c) corresponds with the sectoral breakdown in Table 2.

Figure 3. Kaplan-Meier survivor function by the level of institutional quality and financial development^a



Notes: See Table 1 for definitions and descriptive statistics of variables used for comparison. Observations are divided by the median value of the variable in question. In each panel, the solid (dash) line displays the survivor function of firms in countries with upper (lower) values of the variable used for comparison.

Table 3. Impacts of institutional quality on small business survival

Model	[1]	[2]	[3]	[4]	[5]	[6]
Rule of law	0.8072 *** (-27.51)					
Democracy		0.7681 *** (-29.77)				
National governance			0.78202 *** (-26.72)			
Civil society				0.76916 *** (-23.93)		
Corruption control					0.79787 *** (-30.13)	
Comprehensive IQ index						0.90672 *** (-28.37)
State ownership	1.2084 *** (5.44)	1.2110 *** (5.51)	1.2152 *** (5.60)	1.2452 *** (6.29)	1.2087 *** (5.46)	1.2126 *** (5.54)
Foreign ownership	0.6754 *** (-8.87)	0.6849 *** (-8.55)	0.6725 *** (-8.98)	0.6436 *** (-9.98)	0.6996 *** (-8.05)	0.6823 *** (-8.63)
Profit margin	0.9487 *** (-23.92)	0.9498 *** (-23.37)	0.9499 *** (-23.26)	0.9481 *** (-24.22)	0.9503 *** (-23.06)	0.9496 *** (-23.46)
Solvency ratio	0.9593 *** (-34.67)	0.9589 *** (-35.07)	0.9585 *** (-35.40)	0.9590 *** (-34.74)	0.9588 *** (-35.22)	0.9589 *** (-35.05)
Size	1.0461 *** (3.00)	1.0412 *** (2.68)	1.0353 ** (2.31)	1.0606 *** (3.94)	1.0335 ** (2.18)	1.0418 *** (2.73)
Age	0.9370 *** (-37.33)	0.9376 *** (-36.81)	0.9367 *** (-37.50)	0.9337 *** (-39.67)	0.9385 *** (-36.04)	0.9373 *** (-37.05)
Age ²	1.0006 *** (14.81)	1.0006 *** (14.44)	1.0006 *** (15.02)	1.0006 *** (15.16)	1.0006 *** (14.27)	1.0006 *** (14.60)
NACE division-level fixed effects	Yes	Yes	Yes	Yes	Yes	Yes
N	89083	89083	89083	89083	89083	89083
Log pseudolikelihood	-377792.90	-377726.77	-377817.57	-377926.25	-377724.88	-377775.62
Harrell's C statistic	0.6598	0.6610	0.6596	0.6582	0.6611	0.6602
Wald test (χ^2)	9969.47 ***	10071.59 ***	9993.05 ***	9695.01 ***	10140.06 ***	10020.11 ***

Notes : This table contains results from a survival analysis using the Cox proportional hazards model. Table 1 provides detailed definitions and descriptive statistics of the covariates. Regression coefficients are hazard ratios. Standard errors are computed using the Huber-White sandwich estimator. *z* statistics are reported in parentheses beneath the regression coefficients. The Wald test examines the null hypothesis that all coefficients are zero. ***, **, and * denote statistical significance at the 1%, 5%, and 10% levels, respectively.

Table 4. Impacts of financial development on small business survival

Model	[1]	[2]	[3]	[4]	[5]	[6]
Liquid liabilities	0.77538 *** (-33.68)					
Private credit		0.83030 *** (-16.35)				
Bank assets			0.90935 *** (-26.24)			
Market capitalization				1.10668 *** (25.51)		
Stock trading volume					1.05356 *** (9.35)	
Comprehensive FD index						0.91265 *** (-27.34)
State ownership	1.1919 *** (5.03)	1.2501 *** (6.38)	1.1837 *** (4.82)	1.1866 *** (4.89)	1.2752 *** (6.93)	1.1791 *** (4.70)
Foreign ownership	0.6306 *** (-10.48)	0.5812 *** (-12.43)	0.6588 *** (-9.48)	0.6534 *** (-9.68)	0.5786 *** (-12.53)	0.6468 *** (-9.93)
Profit margin	0.9420 *** (-27.06)	0.9435 *** (-26.20)	0.9429 *** (-26.37)	0.9430 *** (-26.29)	0.9435 *** (-26.04)	0.9421 *** (-26.75)
Solvency ratio	0.9619 *** (-31.98)	0.9606 *** (-32.94)	0.9625 *** (-31.30)	0.9623 *** (-31.49)	0.9603 *** (-32.99)	0.9627 *** (-31.10)
Size	1.0492 *** (3.18)	1.0600 *** (3.90)	1.0258 * (1.68)	1.0229 (1.49)	1.0539 *** (3.51)	1.0251 (1.63)
Age	0.9366 *** (-39.22)	0.9309 *** (-42.52)	0.9354 *** (-39.48)	0.9347 *** (-40.15)	0.9284 *** (-44.31)	0.9353 *** (-39.86)
Age ²	1.0006 *** (15.93)	1.0006 *** (16.89)	1.0006 *** (16.71)	1.0006 *** (17.02)	1.0006 *** (17.66)	1.0006 *** (16.95)
NACE division-level fixed effects	Yes	Yes	Yes	Yes	Yes	Yes
N	89083	89083	89083	89083	89083	89083
Log pseudolikelihood	-377585.29	-378039.32	-377863.34	-377877.06	-378163.20	-377828.99
Harrell's C statistic	0.6630	0.6565	0.6578	0.6575	0.6546	0.6584
Wald test (χ^2)	10223.03 ***	9483.37 ***	10248.13 ***	10227.53 ***	9347.35 ***	10312.77 ***

Notes : This table contains results from a survival analysis using the Cox proportional hazards model. Table 1 provides detailed definitions and descriptive statistics of the covariates. Regression coefficients are hazard ratios. Standard errors are computed using the Huber-White sandwich estimator. *z* statistics are reported in parentheses beneath the regression coefficients. The Wald test examines the null hypothesis that all coefficients are zero. ***, **, and * denote statistical significance at the 1%, 5%, and 10% levels, respectively.

Table 5. Estimation by industry

Model	[1]	[2]	[3]	[4]	[5]	[6]	[7]	[8]
Target industry (NACE Rev2 section classification)	Agriculture, forestry, and fishing (Section A)	Mining and manufacturing (Sections B–E)	Construction (Section F)	Non-financial services (Sections G–J, L–S)	Agriculture, forestry, and fishing (Section A)	Mining and manufacturing (Sections B–E)	Construction (Section F)	Non-financial services (Sections G–J, L–S)
Comprehensive IQ index	0.7496 *** (-13.21)	0.9183 *** (-13.10)	0.9589 *** (-5.37)	0.8932 *** (-22.59)				
Comprehensive FD index					0.8322 *** (-12.39)	0.8973 *** (-15.20)	0.9450 *** (-7.31)	0.9178 *** (-18.91)
State ownership	0.9433 (-0.41)	1.1450 * (1.78)	1.3834 *** (2.90)	1.2364 *** (4.86)	0.9108 (-0.64)	1.0803 (1.01)	1.3394 *** (2.61)	1.2249 *** (4.61)
Foreign ownership	1.0369 (0.13)	0.6417 *** (-5.45)	0.7545 * (-1.66)	0.7017 *** (-6.19)	0.9335 (-0.27)	0.6209 *** (-5.89)	0.7734 (-1.51)	0.6454 *** (-7.77)
Profit margin	0.9294 *** (-10.05)	0.9457 *** (-11.93)	0.9638 *** (-6.36)	0.9497 *** (-17.27)	0.9224 *** (-10.68)	0.9374 *** (-13.61)	0.9611 *** (-6.84)	0.9415 *** (-19.91)
Solvency ratio	0.9599 *** (-7.31)	0.9486 *** (-19.49)	0.9562 *** (-13.89)	0.9617 *** (-25.43)	0.9710 *** (-5.14)	0.9541 *** (-16.87)	0.9587 *** (-12.81)	0.9651 *** (-22.71)
Size	1.0442 (0.72)	1.0341 (1.01)	1.0068 (0.20)	1.0605 *** (2.85)	0.9728 (-0.42)	1.0161 (0.47)	0.9899 (-0.29)	1.0503 ** (2.37)
Age	0.9755 *** (-3.09)	0.9536 *** (-13.06)	0.9197 *** (-17.55)	0.9288 *** (-33.48)	0.9539 *** (-6.01)	0.9527 *** (-13.68)	0.9205 *** (-17.39)	0.9266 *** (-35.04)
Age ²	1.0002 (1.35)	1.0004 *** (9.01)	1.0012 *** (8.98)	1.0007 *** (14.73)	1.0004 * (1.91)	1.0004 *** (10.19)	1.0012 *** (8.52)	1.0007 *** (14.74)
NACE division-level fixed effects	Yes	Yes	Yes	Yes	Yes	Yes	Yes	Yes
N	4820	20194	12501	51568	4820	20194	12501	51568
Log pseudolikelihood	-12690.19	-63903.82	-50565.86	-214127.05	-12732.79	-63879.74	-50554.02	-214231.70
Harrell's C statistic	0.6780	0.6560	0.6410	0.6635	0.6630	0.6562	0.6415	0.6598
Wald test (χ^2)	525.17 ***	1842.38 ***	1337.67 ***	6098.75 ***	542.56 ***	1948.81 ***	1392.37 ***	6183.69 ***

Notes: This table contains results from a survival analysis using the Cox proportional hazards model. Table 1 provides detailed definitions and descriptive statistics of the covariates. Regression coefficients are hazard ratios. Standard errors are computed using the Huber-White sandwich estimator. z statistics are reported in parentheses beneath the regression coefficients. The Wald test examines the null hypothesis that all coefficients are zero. ***, **, and * denote statistical significance at the 1%, 5%, and 10% levels, respectively.

Table 6. Estimation of alternative models for robustness check

Model	[1]	[2]	[3]	[4]	[5]	[6]	[7]	[8]
Estimator	Weibull survival model	Log-logistic survival model	Weibull accelerated failure time model	Complementary log-log model	Weibull survival model	Log-logistic survival model	Weibull accelerated failure time model	Complementary log-log model
Comprehensive IQ index	0.9019 *** (-28.89)	0.0522 *** (27.15)	0.0541 *** (29.11)	-0.1097 *** (-31.27)				
Comprehensive FD index					0.9049 *** (-28.63)	0.0446 *** (23.44)	0.0523 *** (29.02)	-0.1175 *** (-34.20)
State ownership	1.2257 *** (5.55)	-0.1111 *** (-5.49)	-0.1066 *** (-5.55)	0.2281 *** (6.08)	1.1847 *** (4.59)	-0.1035 *** (-5.07)	-0.0887 *** (-4.59)	0.1802 *** (4.76)
Foreign ownership	0.6684 *** (-8.82)	0.2053 *** (8.19)	0.2110 *** (8.81)	-0.3941 *** (-8.78)	0.6354 *** (-10.02)	0.2432 *** (9.83)	0.2375 *** (10.01)	-0.4325 *** (-9.72)
Profit margin	0.9479 *** (-23.26)	0.0321 *** (24.31)	0.0280 *** (23.13)	-0.0506 *** (-22.44)	0.9397 *** (-26.66)	0.0361 *** (27.18)	0.0325 *** (26.52)	-0.0605 *** (-26.34)
Solvency ratio	0.9568 *** (-35.16)	0.0242 *** (35.06)	0.0231 *** (34.97)	-0.0441 *** (-35.43)	0.9610 *** (-31.08)	0.0222 *** (31.65)	0.0208 *** (30.89)	-0.0391 *** (-30.66)
Size	1.0508 *** (3.16)	-0.0109 (-1.21)	-0.0260 *** (-3.16)	0.0633 *** (4.29)	1.0314 * (1.94)	-0.0050 (-0.55)	-0.0162 * (-1.94)	0.0386 ** (2.56)
Age	0.9339 *** (-37.22)	0.0386 *** (33.73)	0.0358 *** (36.93)	-0.0681 *** (-36.13)	0.9322 *** (-39.88)	0.0403 *** (35.22)	0.0368 *** (39.46)	-0.0695 *** (-38.40)
Age ²	1.0006 *** (14.36)	-0.0004 *** (-13.02)	-0.0003 *** (-14.35)	0.0006 *** (13.27)	1.0006 *** (16.62)	-0.0004 *** (-12.89)	-0.0003 *** (-16.60)	0.0006 *** (14.97)
NACE division-level fixed effects	Yes	Yes	Yes	Yes	Yes	Yes	Yes	Yes
N	89083	89083	89083	89083	89083	89083	89083	89083
Log pseudolikelihood	-71150.59	-71003.19	-71150.59	-53922.60	-71180.09	-71125.32	-71180.09	-53846.73
Wald test (χ^2)	9881.47 ***	9466.99 ***	9324.14 ***	9569.76 ***	10215.92 ***	9529.21 ***	9726.11 ***	9975.85 ***

Note: This table contains estimation results using four alternative estimators for a robustness check. Table 1 provides detailed definitions and descriptive statistics of the independent variables. Models [1] and [5] report hazard ratios, while other models report regression coefficients. Standard errors are computed using the Huber-White sandwich estimator. z statistics are reported in parentheses beneath the coefficients. The Wald test examines the null hypothesis that all coefficients are zero. ***, **, and * denote statistical significance at the 1%, 5%, and 10% levels, respectively.

Table 7. Estimation with specific sample restriction by firm size and age for robustness check

Model	[1]	[2]	[3]	[4]	[5]	[6]	[7]	[8]
Sample restriction	Smaller firms ^a	Larger firms ^a	Younger firms ^b	Older firms ^b	Smaller firms ^a	Larger firms ^a	Younger firms ^b	Older firms ^b
Comprehensive IQ index	0.9317 *** (-12.92)	0.8853 *** (-26.50)	0.9086 *** (-18.47)	0.9024 *** (-21.82)				
Comprehensive FD index					0.9269 *** (-15.09)	0.8927 *** (-24.37)	0.9193 *** (-17.48)	0.9133 *** (-19.02)
State ownership	1.2910 *** (4.28)	1.1537 *** (3.33)	0.9444 (-0.91)	1.3075 *** (6.47)	1.2519 *** (3.76)	1.1134 ** (2.47)	0.9265 (-1.22)	1.2863 *** (6.00)
Foreign ownership	0.5754 *** (-8.11)	0.7802 *** (-4.27)	0.5990 *** (-8.69)	0.8313 *** (-2.79)	0.5665 *** (-8.40)	0.7202 *** (-5.70)	0.5815 *** (-9.23)	0.7468 *** (-4.46)
Profit margin	0.9602 *** (-12.94)	0.9399 *** (-19.94)	0.9571 *** (-14.90)	0.9365 *** (-19.65)	0.9551 *** (-14.57)	0.9297 *** (-23.09)	0.9511 *** (-16.88)	0.9280 *** (-22.10)
Solvency ratio	0.9599 *** (-23.37)	0.9571 *** (-26.70)	0.9641 *** (-22.22)	0.9552 *** (-26.12)	0.9626 *** (-21.57)	0.9624 *** (-22.64)	0.9667 *** (-20.33)	0.9588 *** (-23.50)
Size	0.9647 * (-1.81)	1.2137 *** (2.89)	1.0562 *** (3.01)	1.0442 (1.58)	0.9350 *** (-3.31)	1.3848 *** (4.90)	1.0300 (1.60)	1.0448 (1.58)
Age	0.9301 *** (-30.15)	0.9435 *** (-24.87)	0.9021 *** (-6.00)	0.9695 *** (-8.76)	0.9308 *** (-30.11)	0.9396 *** (-27.90)	0.9066 *** (-5.72)	0.9535 *** (-13.05)
Age ²	1.0007 *** (13.61)	1.0005 *** (11.63)	1.0025 (1.19)	1.0003 *** (6.89)	1.0007 *** (13.15)	1.0005 *** (13.91)	1.0024 (1.16)	1.0004 *** (10.20)
NACE division-level fixed effects	Yes	Yes	Yes	Yes	Yes	Yes	Yes	Yes
N	41996	47087	41115	47968	41996	47087	41115	47968
Log pseudolikelihood	-171504.96	-182461.54	-209256.63	-145258.42	-171477.54	-182540.65	-209283.79	-145336.41
Harrell's C statistic	0.6514	0.6718	0.6261	0.6354	0.6514	0.6683	0.6241	0.6314
Wald test (χ^2)	5011.37 ***	5968.20 ***	5632.75 ***	3050.02 ***	5112.02 ***	6150.35 ***	3781.98 ***	2905.63 ***

Notes: This table contains results from a survival analysis using the Cox proportional hazards model. Table 1 provides detailed definitions and descriptive statistics of the covariates. Regression coefficients are hazard ratios. Standard errors are computed using the Huber-White sandwich estimator. *z* statistics are reported in parentheses beneath the regression coefficients. The Wald test examines the null hypothesis that all coefficients are zero. ***, **, and * denote statistical significance at the 1%, 5%, and 10% levels, respectively.

^a Divided according to the median of firm size (3.5553)

^b Divided according to the median of firm age (8 years)

Table 8. Estimation with specific sample restriction by country group for robustness check

Model	[1]	[2]	[3]	[4]	[5]	[6]	[7]	[8]
Sample restriction	Without Central Europe	Without Eastern Europe	Without Baltic countries	Without FSU countries	Without Central Europe	Without Eastern Europe	Without Baltic countries	Without FSU countries
Comprehensive IQ index	0.9458 ^{***} (-12.22)	0.9031 ^{***} (-26.90)	0.8830 ^{***} (-31.04)	0.9702 ^{***} (-3.92)				
Comprehensive FD index					0.9386 ^{***} (-18.15)	0.9192 ^{***} (-22.36)	0.9017 ^{***} (-28.85)	0.9059 ^{***} (-6.97)
State ownership	1.2274 ^{***} (5.78)	1.1959 ^{***} (5.04)	1.2013 ^{***} (5.27)	1.1022 (0.60)	1.1824 ^{***} (4.71)	1.1762 ^{***} (4.53)	1.1658 ^{***} (4.37)	1.0800 (0.48)
Foreign ownership	0.5988 ^{***} (-9.75)	0.7190 ^{***} (-5.71)	0.7252 ^{***} (-7.01)	0.7410 ^{***} (-5.86)	0.6032 ^{***} (-9.65)	0.6475 ^{***} (-7.63)	0.6679 ^{***} (-8.91)	0.7295 ^{***} (-6.17)
Profit margin	0.9500 ^{***} (-22.79)	0.9452 ^{***} (-23.51)	0.9490 ^{***} (-23.36)	0.9636 ^{***} (-7.75)	0.9450 ^{***} (-25.08)	0.9372 ^{***} (-26.57)	0.9402 ^{***} (-27.07)	0.9637 ^{***} (-7.73)
Solvency ratio	0.9609 ^{***} (-32.54)	0.9620 ^{***} (-30.60)	0.9598 ^{***} (-33.91)	0.9292 ^{***} (-24.46)	0.9640 ^{***} (-29.56)	0.9659 ^{***} (-26.75)	0.9643 ^{***} (-29.36)	0.9282 ^{***} (-24.86)
Size	1.0569 ^{***} (3.50)	1.0776 ^{***} (4.16)	1.0486 ^{***} (3.04)	0.9408 ^{***} (-2.87)	1.0414 ^{**} (2.53)	1.0601 ^{***} (3.20)	1.0321 ^{**} (1.99)	0.9352 ^{**} (-3.16)
Age	0.9333 ^{***} (-37.64)	0.9376 ^{***} (-34.66)	0.9386 ^{***} (-35.17)	0.9556 ^{***} (-14.85)	0.9346 ^{***} (-37.56)	0.9333 ^{***} (-38.81)	0.9355 ^{***} (-38.81)	0.9563 ^{***} (-14.65)
Age ²	1.0006 ^{***} (12.57)	1.0005 ^{***} (14.02)	1.0006 ^{***} (13.63)	1.0005 ^{***} (11.70)	1.0006 ^{***} (12.92)	1.0006 ^{***} (16.63)	1.0006 ^{***} (16.29)	1.0004 ^{***} (11.35)
NACE division-level fixed effects	Yes	Yes	Yes	Yes	Yes	Yes	Yes	Yes
N	78357	74297	85226	29369	78357	74297	85226	29369
Log pseudolikelihood	-352425.61	-325411.79	-362525.48	-74123.18	-352337.91	-325553.09	-362629.89	-74103.90
Harrell's C statistic	0.6474	0.6607	0.6609	0.6611	0.6479	0.6570	0.6581	0.6620
Wald test (χ^2)	7976.62 ^{***}	10711.54 ^{***}	9539.31 ^{***}	16483.73 ^{***}	8303.41 ^{***}	8681.52 ^{***}	9862.42 ^{***}	23245.24 ^{***}

Notes: This table contains results from a survival analysis using the Cox proportional hazards model. Table 1 provides detailed definitions and descriptive statistics of the covariates. Regression coefficients are hazard ratios. Standard errors are computed using the Huber-White sandwich estimator. z statistics are reported in parentheses beneath the regression coefficients. The Wald test examines the null hypothesis that all coefficients are zero. ***, **, and * denote statistical significance at the 1%, 5%, and 10% levels, respectively.

Table 9. Estimation in different periods for robustness checks

Model	[1]	[2]	[3]	[4]	[5]	[6]	[7]	[8]
Estimation period	2007–2009	2007-2011	2007-2013	2007-2015	2007–2009	2007-2011	2007-2013	2007-2015
Comprehensive IQ index	1.0601 (0.13)	0.9652 *** (-5.73)	0.9528 *** (-10.45)	0.9173 *** (-22.64)				
Comprehensive FD index					1.0573 (1.04)	1.0066 (1.11)	0.9715 *** (-3.94)	0.9535 *** (-12.13)
State ownership	0.9146 (-0.73)	0.9584 (-0.55)	1.0297 (0.54)	1.1445 *** (3.40)	0.9217 (-0.66)	0.9912 (-0.11)	1.0502 (0.89)	1.1675 *** (3.87)
Foreign ownership	0.4719 *** (-5.73)	0.6369 *** (-5.48)	0.7051 *** (-5.90)	0.6600 *** (-8.31)	0.5003 *** (-5.31)	0.5906 *** (-6.45)	0.6543 *** (-7.22)	0.5864 *** (-10.76)
Profit margin	0.9218 *** (-12.47)	0.9301 *** (-17.31)	0.9401 *** (-19.82)	0.9468 *** (-22.32)	0.9266 *** (-11.82)	0.9284 *** (-17.74)	0.9371 *** (-20.77)	0.9413 *** (-24.48)
Solvency ratio	0.9671 *** (-9.09)	0.9614 *** (-16.74)	0.9575 *** (-24.86)	0.9588 *** (-31.16)	0.9649 *** (-9.81)	0.9612 *** (-16.61)	0.9582 *** (-24.07)	0.9605 *** (-29.18)
Size	0.8869 *** (-3.32)	0.9455 ** (-2.15)	0.9752 (-1.26)	0.9982 (-0.11)	0.8892 *** (-3.24)	0.9602 (-1.56)	0.9834 (-0.84)	1.0065 (0.40)
Age	0.9236 *** (-17.11)	0.9267 *** (-24.48)	0.9351 *** (-28.80)	0.9373 *** (-34.51)	0.9254 *** (-16.59)	0.9225 *** (-26.11)	0.9315 *** (-30.90)	0.9323 *** (-38.41)
Age ²	1.0007 *** (14.22)	1.0006 *** (14.89)	1.0006 *** (14.87)	1.0005 *** (14.97)	1.0007 *** (13.60)	1.0007 *** (15.72)	1.0006 *** (15.90)	1.0006 *** (16.90)
NACE division-level fixed effects	Yes	Yes	Yes	Yes	Yes	Yes	Yes	Yes
N	89083	89083	89083	89083	89083	89083	89083	89083
Log pseudolikelihood	-45995.18	-107491.13	-189751.54	-302086.10	-46000.31	-107507.05	-189798.58	-302277.40
Harrell's C statistic	0.6605	0.6640	0.6577	0.6589	0.6611	0.6631	0.6564	0.6558
Wald test (χ^2)	54023.92 ***	27969.40 ***	4848.96 ***	7910.82 ***	1318.26 ***	27807.47 ***	4741.82 ***	7552.02 ***

Notes: This table contains results from a survival analysis using the Cox proportional hazards model. Table 1 provides detailed definitions and descriptive statistics of the covariates. Regression coefficients are hazard ratios. Standard errors are computed using the Huber-White sandwich estimator. z statistics are reported in parentheses beneath the regression coefficients. The Wald test examines the null hypothesis that all coefficients are zero. ***, **, and * denote statistical significance at the 1%, 5%, and 10% levels, respectively.

Table 10. Estimation with additional firm-level control variables for robustness checks

Model	[1]	[2]	[3]	[4]	[5]	[6]	[7]	[8]
Additional control	Control for legal form	Control for linkage with capital market	Control for business organization	With all additional firm-level controls	Control for legal form	Control for linkage with capital market	Control for business organization	With all additional firm-level controls
Comprehensive IQ index	0.8940 ^{***} (-29.20)	0.8966 ^{***} (-27.38)	0.9082 ^{***} (-26.81)	0.8875 ^{***} (-25.97)				
Comprehensive FD index					0.8974 ^{***} (-27.34)	0.9071 ^{***} (-22.72)	0.9081 ^{***} (-23.01)	0.8945 ^{***} (-22.48)
State ownership	1.1214 ^{***} (3.20)	1.2554 ^{***} (6.19)	1.2208 ^{***} (5.73)	1.1504 ^{***} (3.68)	1.0110 ^{**} (2.30)	1.2355 ^{***} (5.70)	1.2022 ^{***} (5.26)	1.0418 ^{**} (1.97)
Foreign ownership	0.6505 ^{***} (-9.63)	0.7619 ^{***} (-5.44)	0.6911 ^{***} (-8.30)	0.7349 ^{***} (-6.08)	0.6069 ^{***} (-11.27)	0.6824 ^{***} (-7.73)	0.6229 ^{***} (-10.75)	0.6724 ^{***} (-7.90)
Profit margin	0.9501 ^{***} (-23.16)	0.9427 ^{***} (-23.22)	0.9499 ^{***} (-23.18)	0.9432 ^{***} (-22.79)	0.9437 ^{***} (-25.87)	0.9339 ^{***} (-26.70)	0.9426 ^{***} (-26.46)	0.9360 ^{***} (-25.48)
Solvency ratio	0.9578 ^{***} (-35.60)	0.9613 ^{***} (-27.05)	0.9591 ^{***} (-34.73)	0.9607 ^{***} (-27.12)	0.9607 ^{***} (-32.65)	0.9662 ^{***} (-23.09)	0.9621 ^{***} (-31.58)	0.9645 ^{***} (-24.08)
Size	1.0483 ^{***} (3.16)	1.0813 ^{***} (3.11)	1.0408 ^{***} (2.63)	1.0696 ^{**} (2.01)	1.0386 ^{**} (2.51)	1.0315 (1.40)	1.0407 ^{***} (2.61)	1.0389 (1.35)
Age	0.9343 ^{***} (-37.82)	0.9348 ^{***} (-33.74)	0.9388 ^{***} (-35.29)	0.9326 ^{***} (-33.62)	0.9319 ^{***} (-41.01)	0.9305 ^{***} (-37.57)	0.9353 ^{***} (-38.92)	0.9286 ^{***} (-36.97)
Age ²	1.0006 ^{***} (14.54)	1.0006 ^{***} (12.63)	1.0005 ^{***} (14.39)	1.0006 ^{***} (12.64)	1.0006 ^{***} (16.94)	1.0006 ^{***} (14.50)	1.0006 ^{***} (16.65)	1.0006 ^{***} (14.39)
Joint-stock company	0.8263 ^{***} (-7.64)			0.8019 ^{***} (-7.67)	0.6884 ^{***} (-14.57)			0.6859 ^{***} (-12.98)
Limited liability company	0.7810 ^{***} (-11.48)			0.7451 ^{***} (-12.15)	0.6509 ^{***} (-19.56)			0.6315 ^{***} (-18.89)
Partnership	1.1078 ^{***} (3.66)			1.1117 ^{***} (3.43)	1.0267 ^{***} (7.04)			1.0826 ^{***} (6.34)
Cooperative	0.9078 ^{**} (-2.18)			0.8993 ^{**} (-2.22)	0.7213 ^{***} (-7.41)			0.7224 ^{***} (-6.90)
Listed		0.6783 ^{***} (-3.91)		0.7183 ^{***} (-3.29)		0.6579 ^{***} (-4.21)		0.6864 ^{***} (-3.73)
Gearing		1.0000 (0.62)		1.0000 (0.80)		1.0000 (0.71)		1.0000 (1.18)
Business network			0.9447 ^{***} (-3.11)	0.9609 ^{**} (-2.08)			0.9437 ^{***} (-3.06)	0.9593 ^{**} (-2.06)
Business diversification			1.0050 ^{***} (3.72)	1.0095 ^{***} (5.94)			1.0087 (0.91)	1.0030 [*] (1.80)
NACE division-level fixed effects	Yes	Yes	Yes	Yes	Yes	Yes	Yes	Yes
N	89083	74227	88808	73976	89083	74227	88808	73976
Log pseudolikelihood	-377573.24	-288096.16	-376970.86	-287249.79	-377625.35	-288205.89	-377064.10	-287343.58
Harrell's C statistic	0.6647	0.6574	0.6612	0.6636	0.6633	0.6547	0.6594	0.6614
Wald test (χ^2)	9996.95 ^{***}	7560.48 ^{***}	10082.68 ^{***}	7615.46 ^{***}	10217.11 ^{***}	7497.54 ^{***}	10014.02 ^{***}	7668.07 ^{***}

Notes: This table contains results from a survival analysis using the Cox proportional hazards model. Table 1 provides detailed definitions and descriptive statistics of the covariates. Regression coefficients are hazard ratios. Standard errors are computed using the Huber-White sandwich estimator. z statistics are reported in parentheses beneath the regression coefficients. The Wald test examines the null hypothesis that all coefficients are zero. ***, **, and * denote statistical significance at the 1%, 5%, and 10% levels, respectively.

Appendix 1. Country score and correlation matrix of IQ variables

(a) Country score

Country	Rule of law	Democracy	National governance	Civil society	Corruption control	Comprehensive IQ index
Bosnia and Herzegovina	-0.850	-0.886	-1.136	-1.480	-0.054	-1.214
Bulgaria	-0.241	0.300	0.454	-0.138	0.402	1.662
Croatia	-0.090	-0.587	0.000	-0.474	-0.509	0.377
Czech Republic	1.221	0.959	0.454	1.204	0.629	3.669
Estonia	1.627	1.258	1.136	0.533	1.539	4.369
Hungary	1.410	1.073	1.136	1.204	1.084	4.400
Latvia	0.913	1.145	1.363	0.868	1.084	4.116
Lithuania	0.984	0.918	0.909	0.868	0.174	3.366
Macedonia	-0.905	-0.659	-0.227	-1.145	-0.509	-0.601
Moldova	-0.886	-1.834	-2.045	-1.816	-1.646	-3.178
Montenegro	-0.509	-0.773	-0.909	-0.809	-1.191	-0.945
Poland	0.512	0.846	0.227	1.204	1.084	3.358
Romania	-0.278	-0.113	0.000	0.197	0.174	1.287
Russian Federation	-1.426	-1.103	-1.136	-0.474	-1.419	-1.559
Serbia	-0.904	-0.515	-0.227	-0.474	-0.281	0.015
Slovakia	0.728	1.073	1.136	1.204	0.857	3.981
Ukraine	-1.304	-1.103	-1.136	-0.474	-1.419	-1.502

(b) Correlation matrix

	Rule of law	Democracy	National governance	Civil society	Corruption control	Comprehensive IQ index
Rule of law	1.000					
Democracy	0.922	1.000				
National governance	0.858	0.954	1.000			
Civil society	0.827	0.922	0.853	1.000		
Corruption control	0.859	0.934	0.888	0.789	1.000	
Comprehensive IQ index	0.934	0.995	0.958	0.933	0.933	1.000

Note: For definitions and descriptive statistics of the variables, see Table 1.

Appendix 2. Country score and correlation matrix of FD variables

(a) Country score

Country	Liquid liabilities	Private credit	Bank assets	Market capitalization	Stock trading volume	Comprehensive FD index
Bosnia and Herzegovina	0.557	0.371	0.522	0.968	-0.717	2.119
Bulgaria	1.174	0.148	0.026	-0.298	-0.241	2.355
Croatia	1.406	1.159	0.523	0.823	-0.666	2.999
Czech Republic	1.890	-0.210	0.364	-0.280	1.940	1.794
Estonia	0.150	1.790	0.521	-0.161	-0.206	3.012
Hungary	0.538	0.942	0.297	-0.179	2.256	1.753
Latvia	-0.240	2.095	0.440	-1.101	-0.837	3.533
Lithuania	-0.305	0.380	0.520	-0.245	-0.117	1.948
Macedonia	-0.534	-0.911	-0.064	-0.942	-0.132	1.119
Moldova	-0.303	-0.982	-1.875	-0.686	-0.775	0.758
Montenegro	-1.210	-0.857	0.357	1.065	-0.202	0.344
Poland	0.086	-0.535	0.520	0.135	0.760	1.131
Romania	-1.264	-1.170	0.525	-0.593	-0.382	0.794
Russian Federation	-1.180	-0.935	-3.162	2.887	1.492	-1.950
Serbia	-1.503	-0.807	0.114	-0.201	-0.370	0.653
Slovakia	1.052	-0.190	0.520	-1.281	-0.935	2.811
Ukraine	-0.315	-0.288	-0.148	0.086	-0.869	1.480

(b) Correlation matrix

	Liquid liabilities	Private credit	Bank assets	Market capitalization	Stock trading volume	Comprehensive FD index
Liquid liabilities	1.000					
Private credit	0.452	1.000				
Bank credit	0.339	0.411	1.000			
Market capitalization	-0.204	-0.163	-0.517	1.000		
Stock trading volume	0.166	-0.069	-0.214	0.321	1.000	
Comprehensive FD index	0.633	0.777	0.729	-0.606	-0.373	1.000

Note: For definitions and descriptive statistics of the variables, see Table 1.

Appendix 3. Estimation results of principal component analysis

(a) IQ variables

Eigenvalue of the correlation matrix				Eigenvectors of the first component	
Component no.	Eigenvalue	Difference	Cumulative percentage of total variance	Variables	Eigenvector
1	4.7276	4.540	0.946	Rule of law	0.4529
2	0.1879	0.143	0.983	Democracy	0.4585
3	0.0450	0.013	0.992	National governance	0.4463
4	0.0321	0.025	0.999	Civil society	0.4301
5	0.0074	.	1.000	Corruption control	0.4478

(b) FD variables

Eigenvalue of the correlation matrix				Eigenvectors of the first component	
Component no.	Eigenvalue	Difference	Cumulative percentage of total variance	Variables	Eigenvector
1	3.3898	2.412	0.678	Liquid liabilities	0.4097
2	0.9780	0.547	0.196	Private credit	0.4031
3	0.4309	0.252	0.086	Bank asset	0.5187
4	0.1793	0.157	0.036	Market capitalization	-0.5144
5	0.0221	.	0.004	Stock trading volume	-0.3687

Note: For definitions and descriptive statistics of the variables, see Table 1.

IES Working Paper Series

2020

1. Tomas Kucera: *Cognitive Bias Mitigation: How to Make Decision-Making Rational?*
2. Tomas Kucera: *Are Employment Effects of Minimum Wage the Same Across the EU? A Meta-Regression Analysis*
3. Petr Hanzlik, Petr Teplý: *Institutional and Other Determinants of the Net Interest Margin of US and European Banks in a Low Interest Rate Environment*
4. Michal Hlavacek, Ilgar Ismayilov, Ayaz Zeynalov: *Reassessment of the Fiscal Multiplier in Developing Countries: Regime-Switching Model*
5. Evzen Kocenda, Karen Poghosyan: *Nowcasting Real GDP Growth: Comparison between Old and New EU Countries*
6. Diana Zigraiova, Tomas Havranek, Jiri Novak: *How Puzzling Is the Forward Premium Puzzle? A Meta-Analysis*
7. Barbora Malinska: *Time-Varying Pricing of Risk in Sovereign Bond Futures Returns*
8. Shahriyar Aliyev, Evzen Kocenda: *ECB Monetary Policy and Commodity Prices*
9. Roman Kalabiska, Michal Hlavacek: *Regional Determinants of Housing Prices in the Czech Republic*
10. Boris Fiser, Roman Horvath: *Are Exchange Rates Less Important for Trade in a More Globalized World? Evidence for the New EU Members*
11. Jana Votavkova: *The Effect of Inpatient User Charges on Inpatient Care*
12. Lenka Slegerova: *Using 'Costs States' in a Semi-Markov Model to Estimate Cost-Effectiveness with an Illustration for Metastatic HER2+ Breast Cancer in the Czech Republic*
13. Periklis Brakatsoulas, Jiri Kukacka: *Credit Rating Downgrade Risk on Equity Returns*
14. Roman Horvath: *Natural Catastrophes and Financial Development: An Empirical Analysis*
15. Vit Machacek: *Globalization of Science: Evidence from Authors in Academic Journals by Country of Origin*
16. Nino Buliskeria, Jaromir Baxa: *Do Rural Banks Matter That Much? Burgess and Pande (AER, 2005) Reconsidered*
17. Brenda Solis Gonzalez: *Determinants of Non-performing Loans: Can National Asset Management Companies Help to Alleviate the Problems?*
18. Kseniya Bortnikova: *Beauty and Productivity: A Meta-Analysis*
19. Radomir Mach, Milan Scasny, Jan Weinzettel: *The Importance of Retail Trade Margins for Calculating the Carbon Footprint of Consumer Expenditures: A Sensitivity Analysis*
20. Javier Garcia-Bernardo, Petr Jansky, Thomas Tørsløv: *Multinational Corporations' Effective Tax Rates: Evidence from Orbis*

21. Petr Jansky, Andres Knobel, Markus Meinzer, Tereza Palanska, Miroslav Palansky: *Country-by-Country Reporting and Other Financial Transparency Measures Affecting the European Union*
22. Marek Sedivy: *Mortality shocks and household consumption: The case of Mexico*
23. Lydia Chikumbi, Milan Scasny, Edwin Muchapondwa, Djiby Thiam: *Premium Price For Natural Preservatives In Wine: A Discrete Choice Experiment*
24. Roman Horvath: *Peer Effects in Central Banking*
25. Nicholas Tyack, Milan Scasny: *Estimating the Social Value of Specific Crop Diversity Conservation Plans: Do Czechs Care More About Conserving Hop, Wine or Fruit Tree Varieties?*
26. Salim Turdaliev: *Labor Force Participation of Married Woman in Russia*
27. Jaromir Baxa, Michal Paulus: *Exchange rate misalignments, growth, and institutions*
28. Michal Paulus, Jaromir Baxa, Eva Michalikova: *Does Enforcement Of the Rules Against Foreign Bribery Discourage Exports? A Case of the OECD Anti-Bribery Convention*
29. Tomas Havranek, Zuzana Irsova, Lubica Laslopova, Olesia Zeynalova: *Skilled and Unskilled Labor Are Less Substitutable than Commonly Thought*
30. Levan Bezhanishvili, William Appleman, Zurab Abramishvili: *Was the Georgian Policy Shifting Public Sector Working Hours by One Hour “Family Friendly” and Did It Increase Female Labor Participation?*
31. Fan Yang: *A Survey of Empirical Literature on Hedge Fund Performance*
32. Ali Elminejada, Tomas Havranek, Roman Horváth: *A Meta-Analysis of the Frisch Extensive Margin Elasticity*
33. Petra Landovská: *Business cycle sensitivity of Statutory Health Insurance: Evidence from the Czech Republic*
34. Natalia Li: *Estimating the Relationship Between Resource Intensity and Occupational Health and Safety in Kazakhstan*
35. Sophio Togonidze, Evžen Kočenda: *Macroeconomic Responses of Emerging Market Economies to Oil Price Shocks: Analysis by Region and Resource Profile*
36. Olena Chornaa, Lucas van der Veldeb : *Do Women Benefit from Minimum Wages?*
37. Sarah Godar and Petr Janský: *Corporate Profit Misalignment: Evidence from German Headquarter Companies and Their Foreign Affiliates*
38. Leyla Ates, Alex Cobham, Moran Harari, Petr Janský, Markus Meinzer, Lucas Millan-Narotzky, Miroslav Palanský: *The Corporate Tax Haven Index: A New Geography of Profit Shifting*
39. Ichiro Iwasaki, Evžen Kočenda, Yoshisada Shida: *Institutions, Financial Development, and Small Business Survival: Evidence from European Emerging Markets*

All papers can be downloaded at: <http://ies.fsv.cuni.cz>



Univerzita Karlova v Praze, Fakulta sociálních věd
Institut ekonomických studií [UK FSV – IES] Praha 1, Opletalova 26

E-mail: ies@fsv.cuni.cz

<http://ies.fsv.cuni.cz>